

Update Installation Instructions for Huntron Products with Huntron Workstation 4.3

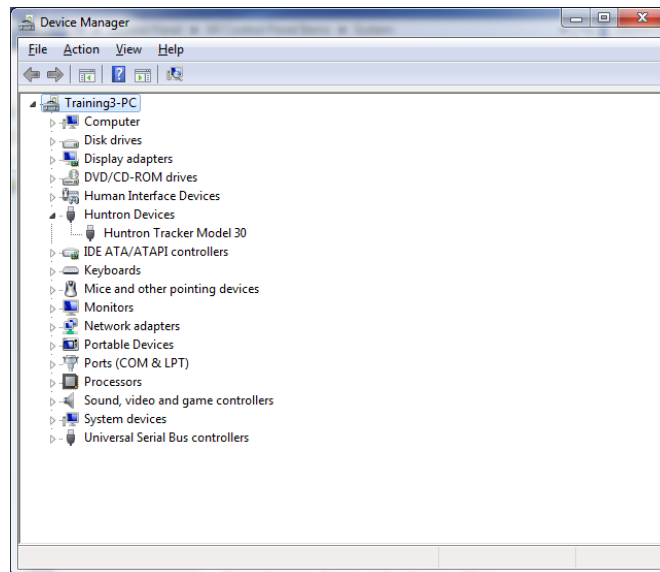
Table of Contents

- Installing the Updated Tracker Model 30/Access Tracker Hardware Driver 2
- Installing the Updated Tracker Model 30/Access Tracker Firmware 6
- Troubleshooting a Tracker Model 30/Access Tracker Firmware Update 10
- Installing the Updated Tracker 2800/2800S Hardware Driver 11
- Installing the Updated Tracker 2800/2800S Firmware 15
- Installing Updated Motor Control Drivers for Access Probers 19
- Tracker Model 30 Firmware Back to 4.2 27
- Tracker Model 30 Load 4.2 Driver 29

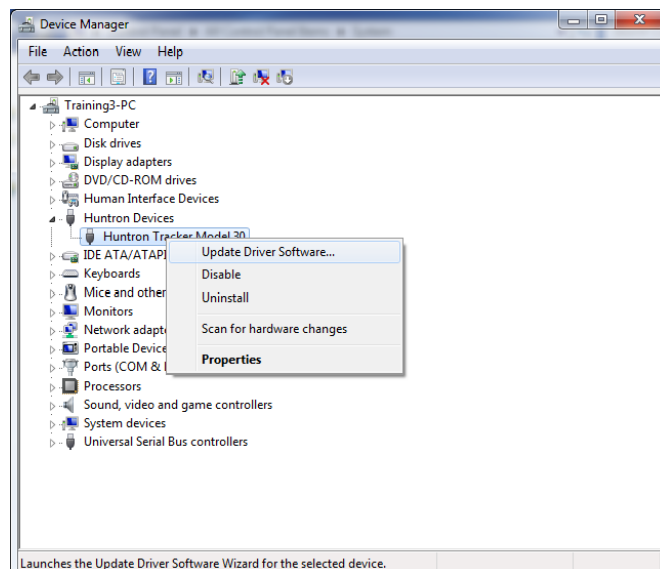
To use Huntron Workstation version 4.3 with your existing Huntron hardware it is necessary to install updates to the Tracker hardware driver, Tracker firmware and Access Prober motor control hardware driver. This document explains these procedures. Please be aware that this document shows the process using Windows 7 64bit. If you are using a different version of Windows, the procedure and images may be slightly different.

Installing the Updated Tracker Model 30/Access Tracker Hardware Driver

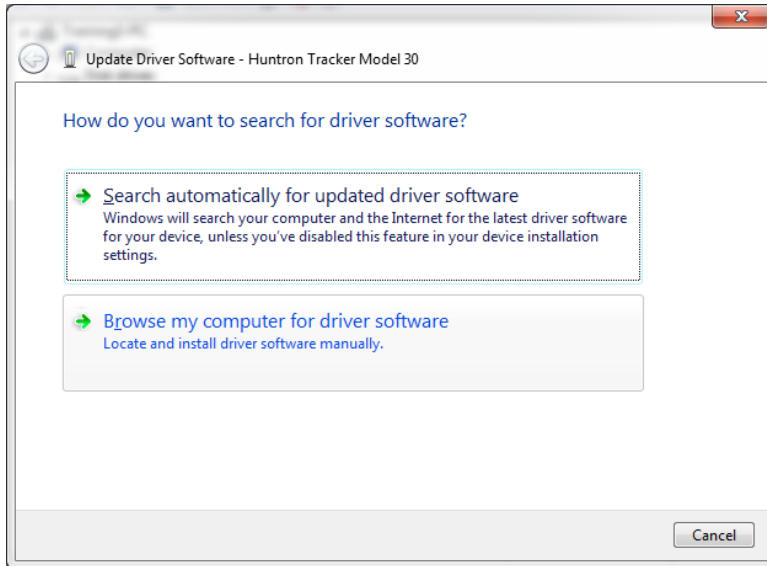
Open the **Windows Device Manager** (contact Huntron or perform an internet search if you do not know how to locate the Device Manager). Access Probers with an embedded Access Tracker use these same instructions.



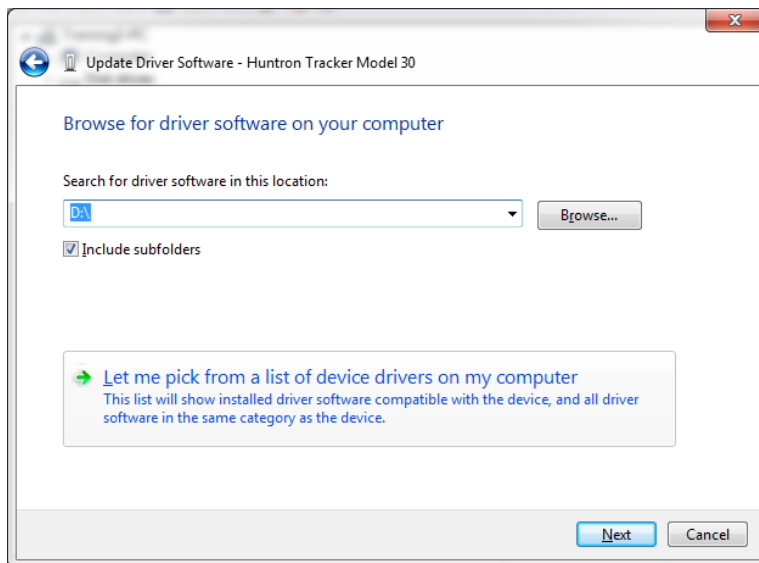
Locate the **Huntron Devices** folder in the Device Manager and the Huntron Tracker Model 30 device as shown above. Right-click the **Huntron Tracker Model 30** device and select **Update Driver Software** from the menu as shown below.



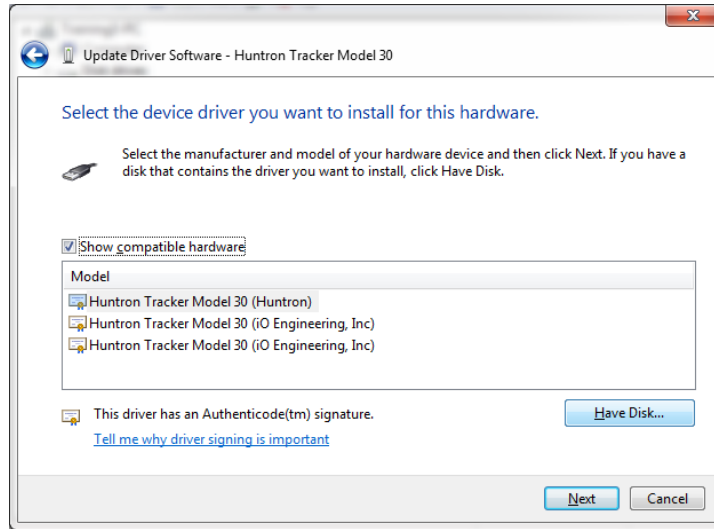
Select the option to **“Browse my computer for driver software”** as shown below.



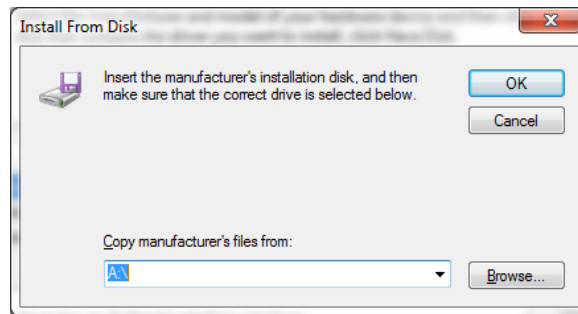
Select the option to **“Let me pick from a list of device drivers on my computer”**.



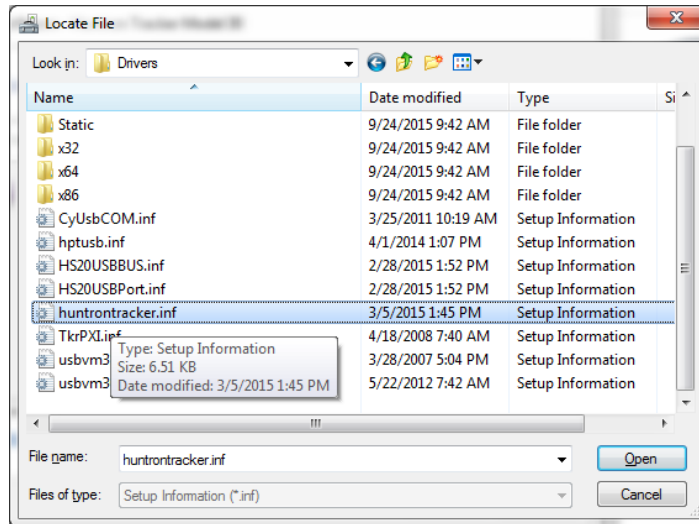
Select the **Have Disk...** button as shown below.



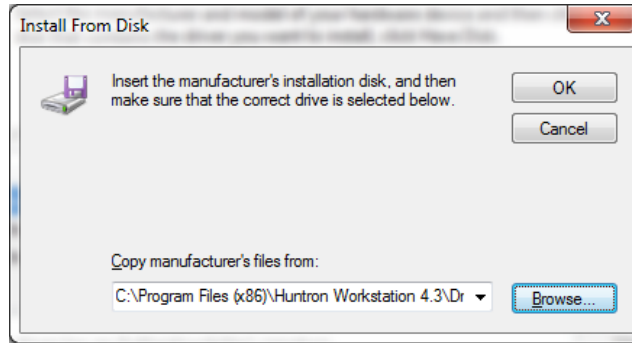
Click the **Browse** button to select the location of the correct driver.



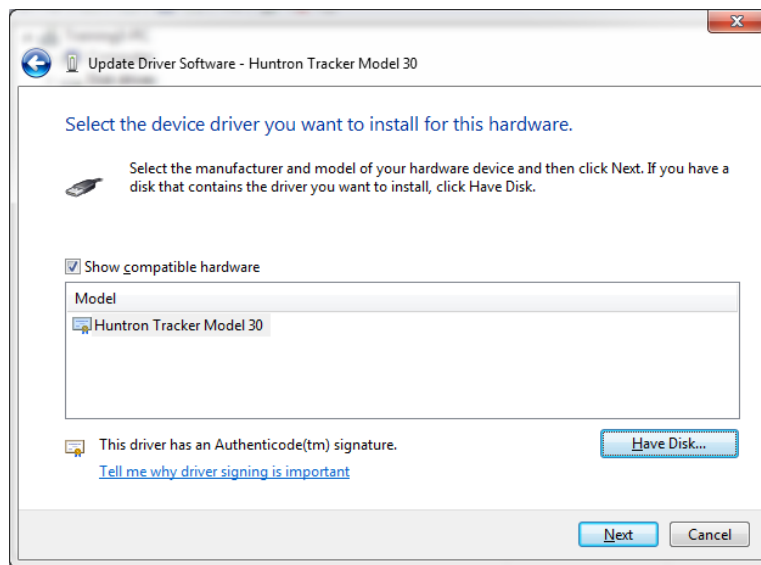
Browse to the file located at "**C:\Program Files\Huntron Workstation 4.3\Drivers\huntrontracker.inf**" as shown in the image below. If you are using 64bit Windows use "**Program Files (x86)**" instead of "Program Files". Click the **Open** button to select the "huntrontracker.inf" file.



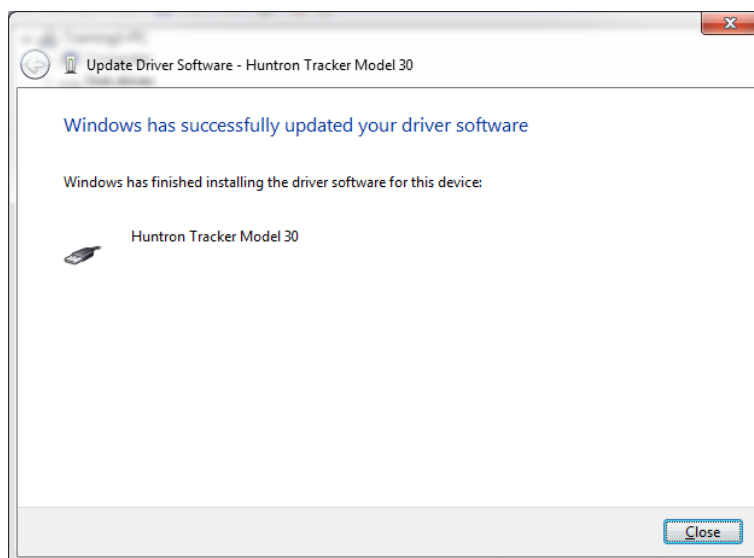
Make sure the file path looks correct then click the **OK** button to begin the driver installation.



You will see the Huntron Tracker Model 30 hardware driver listed. Click the **Next** button to continue.

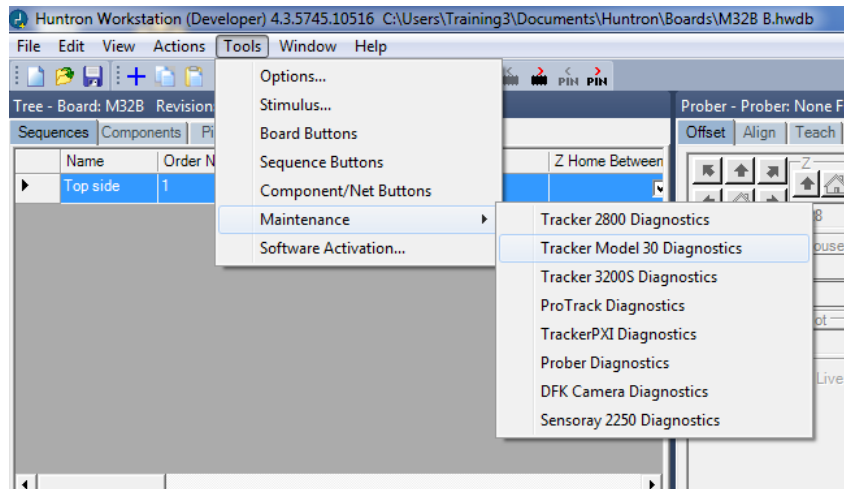


The hardware driver should install and display the window shown below. Click the **Close** button and the exit from the Windows Device Manager. **Do not power off the Tracker.**

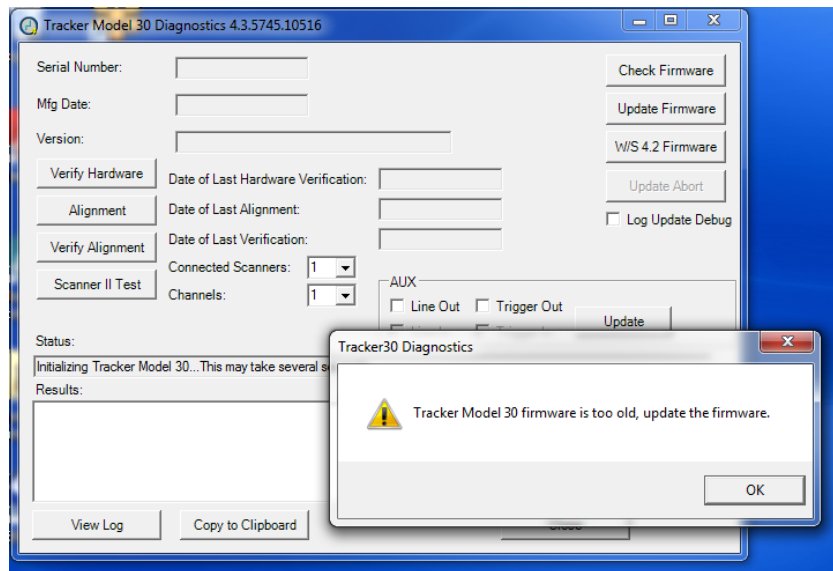


Installing the Updated Tracker Model 30/Access Tracker Firmware

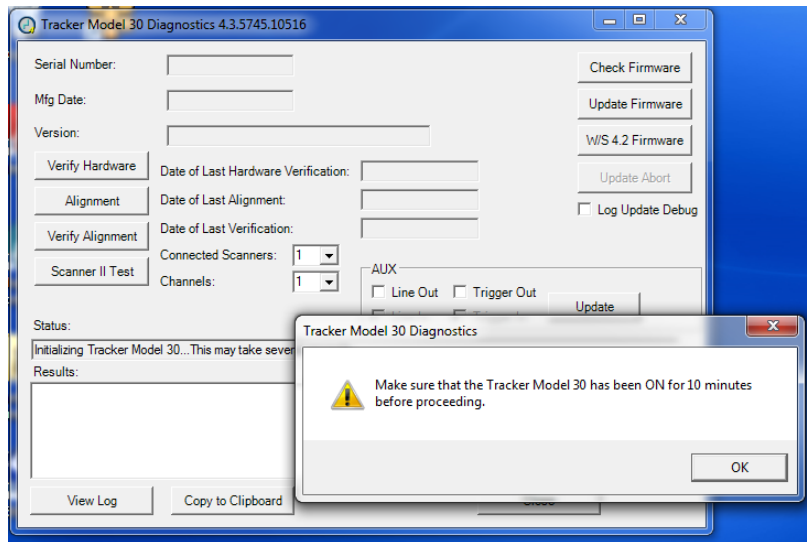
Your Tracker Model 30 should already be powered ON from the previous procedure. Start the Huntron Workstation version 4.3 software. Browse to the **Tools** menu and select **Maintenance/Tracker Model 30 Diagnostics** as shown below. Access Probers with an embedded Access Tracker use these same instructions.



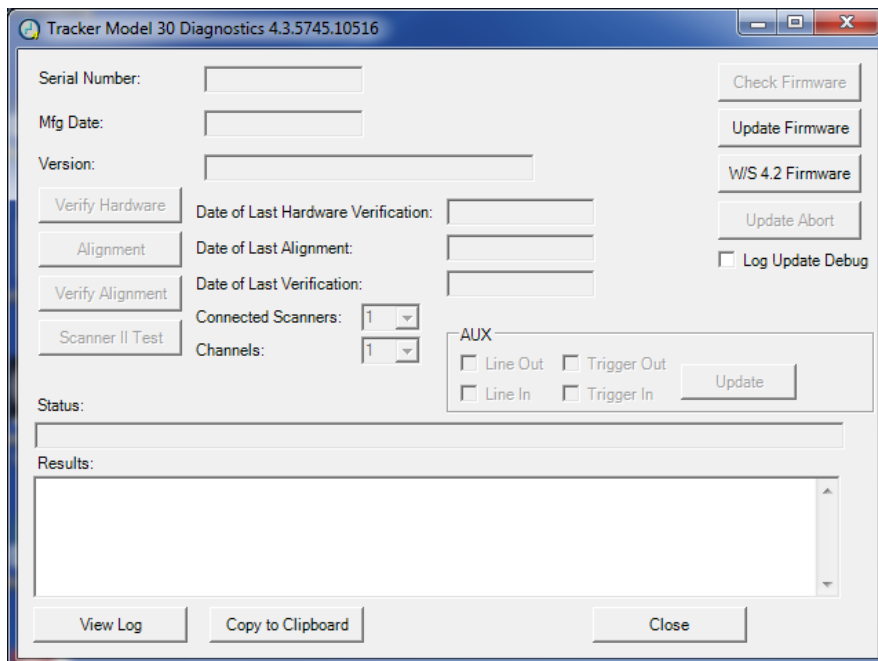
When the Diagnostics start you may see a message indicating that your Tracker firmware is out of date. Click **OK** to continue.



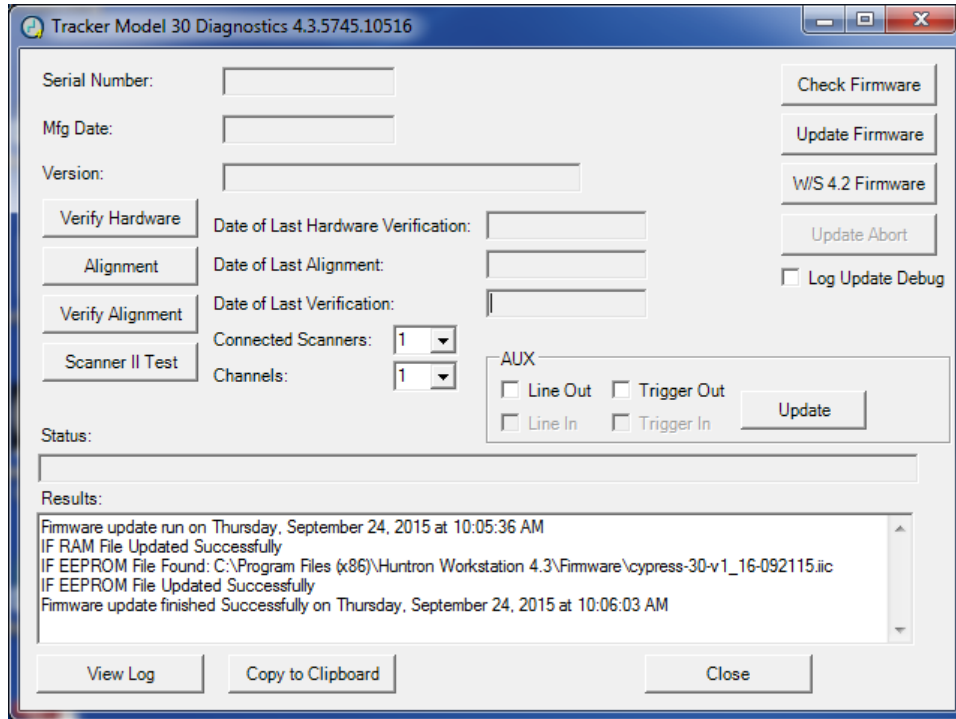
Click the **OK** button if your Tracker has been powered ON for 10 minutes. This is just to ensure that the internal electronics are at a nominal operating temperature.



Click the **Update Firmware** button to begin the new firmware upload. You will see a series of status messages displayed in the Results field. **DO NOT** power off the unit during the update process.

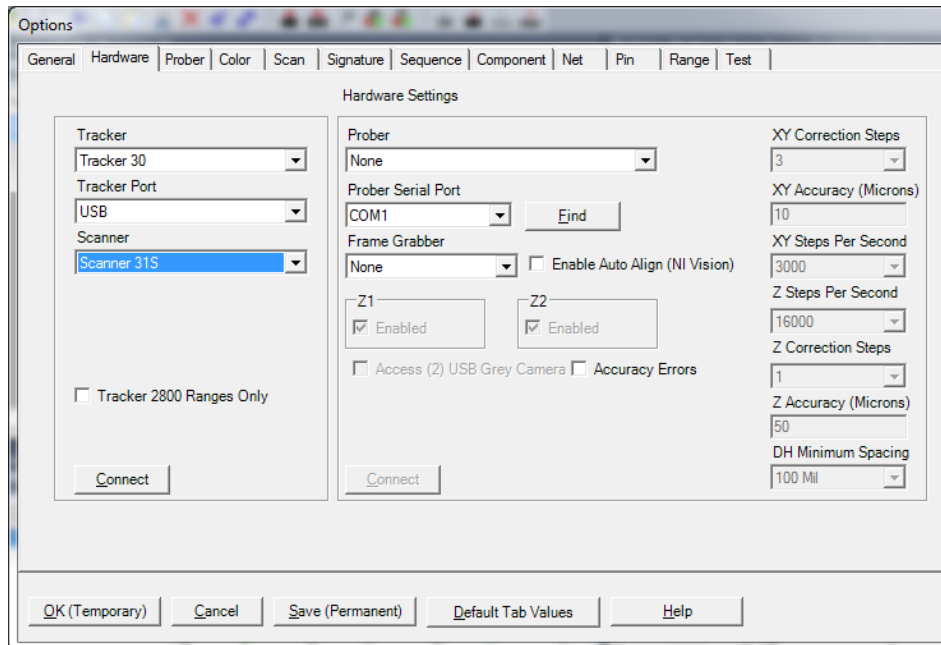


When the firmware update is complete you should see the messages in the Results field shown below.

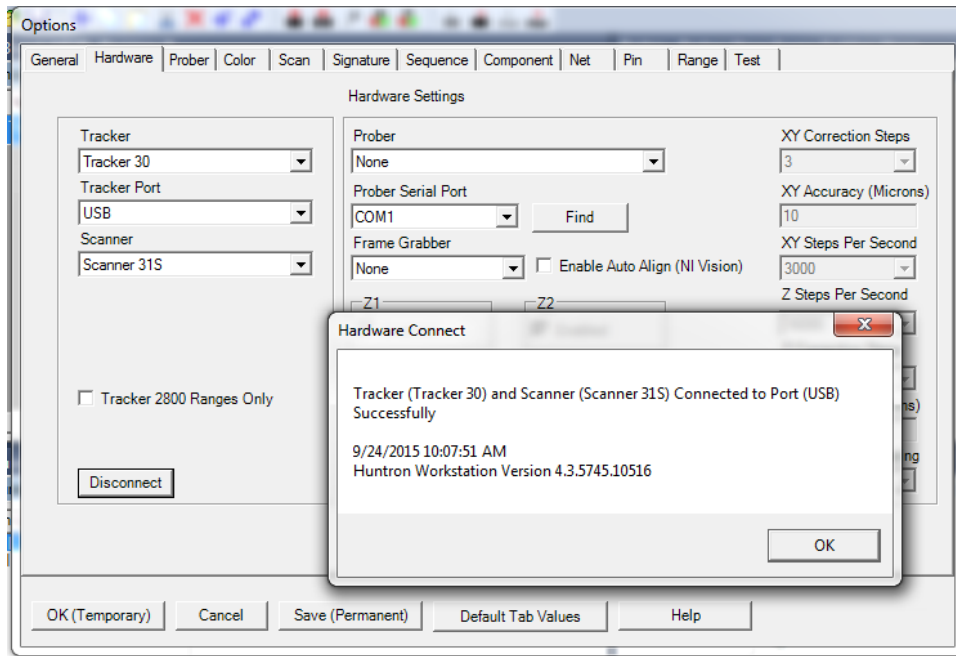


Click the **Close** button to exit the Tracker Model 30 Diagnostics.

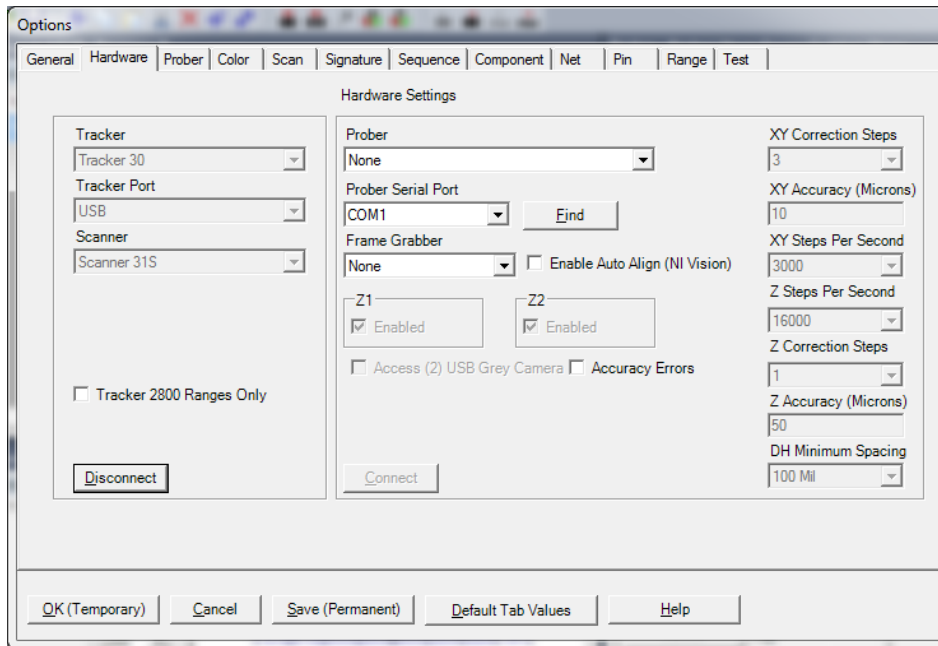
Return to Huntron Workstation and select the **Tools menu/Options**. Select the **Hardware tab** and select **Tracker Model 30** (or **Access Tracker** for Probers with Tracker inside) from the **Tracker** menu and **USB** from the **Tracker Port** menu. If you are using a Huntron Scanner, select the correct Scanner from the **Scanner** menu. Click the **Connect** button to connect to your hardware.



You should see a message indicating that the connection was successful. Click the OK button to close the message.



The Connect button should now be labelled Disconnect. Click the **Save (Permanent)** button to save the current hardware configuration.



The updates to your Tracker Model 30 or Access Tracker are now complete.

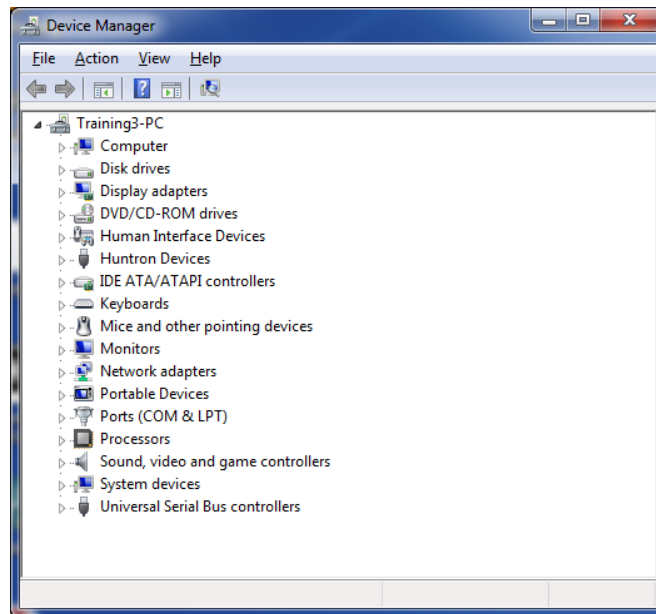
Troubleshooting a Tracker Model 30/Access Tracker Firmware Update

If you encounter problems while trying to update the Tracker Model 30 firmware, try these steps:

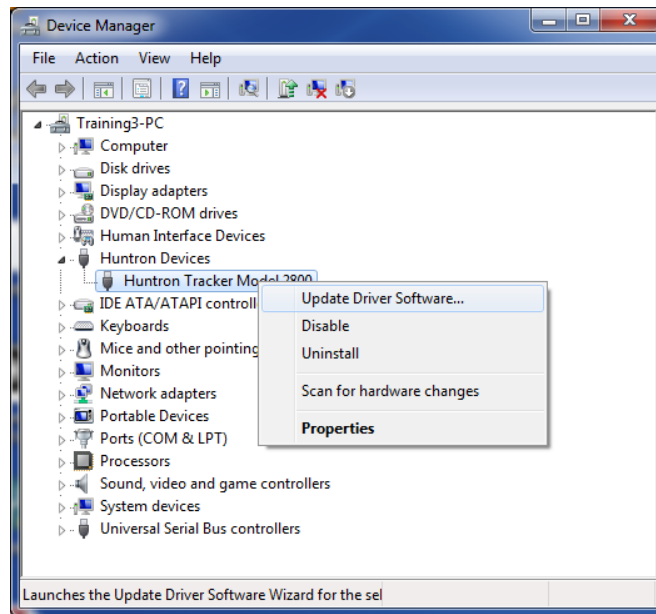
1. Follow the instructions for “Load Tracker Model 30 4.2 Driver” on page 29 of this document. You may need to do these steps twice before the driver loads properly. **Do not power off the Tracker when moving to the next step.** You can verify the driver version by right-clicking the device in Device Manager, selecting Properties then select the Driver tab. The driver version should be 1.2.0.1.
2. Once the 4.2 Driver is installed, follow the instructions “Installing the Updated Tracker Model 30/Access Tracker Hardware Driver” listed above on page 2. **Do not power off the Tracker.**

Installing the Updated Tracker 2800/2800S Hardware Driver

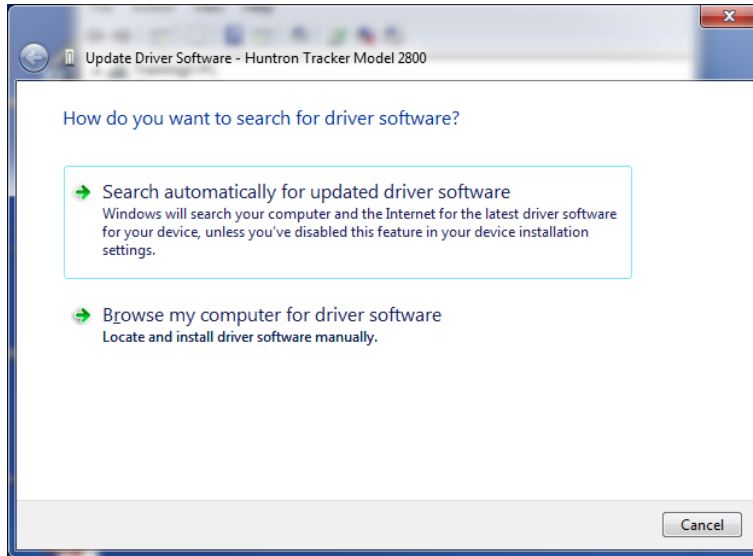
Open the **Windows Device Manager** (contact Huntron or perform an internet search if you do not know how to locate the Device Manager).



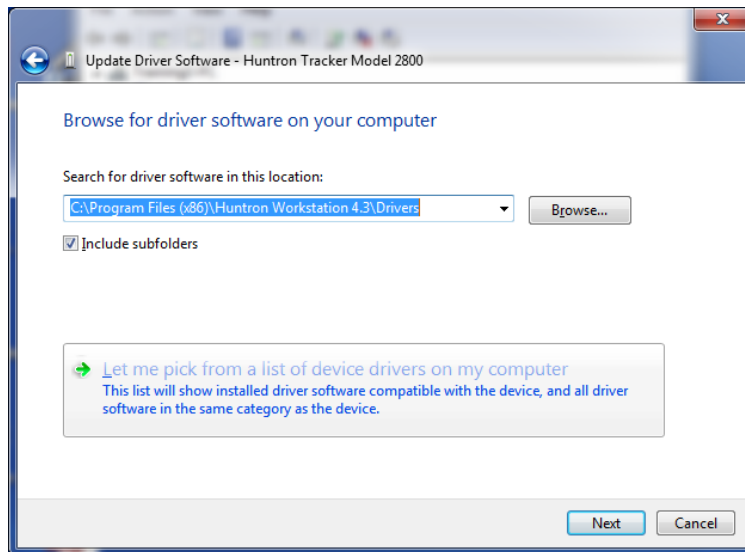
Locate the **Huntron Devices** folder and the Huntron Tracker 2800 device as shown above. Right-click the **Huntron Tracker 2800** device and select **Update Driver Software** from the menu as shown below.



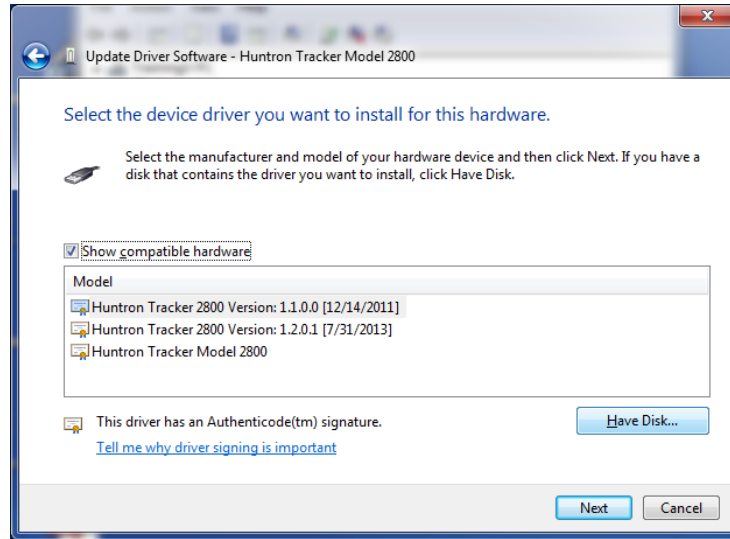
Select the option to **“Browse my computer for driver software”** as shown below.



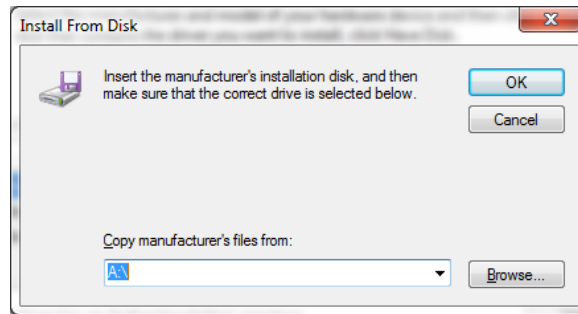
Select the option to **“Let me pick from a list of device drivers on my computer”**.



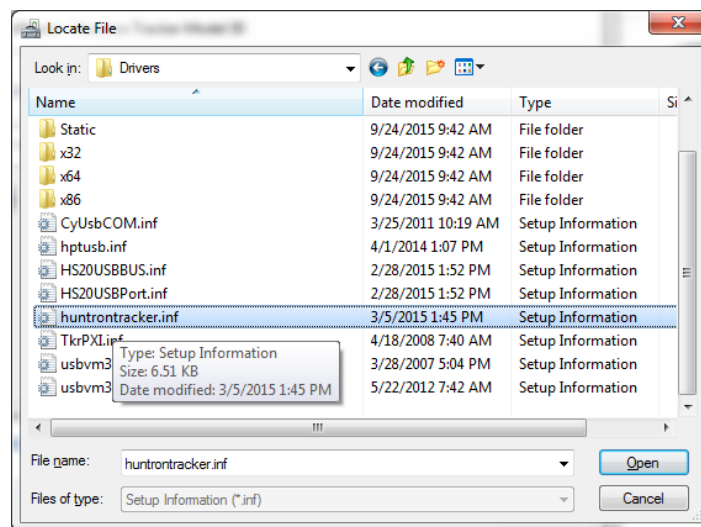
Select the **Have Disk...** button as shown below.



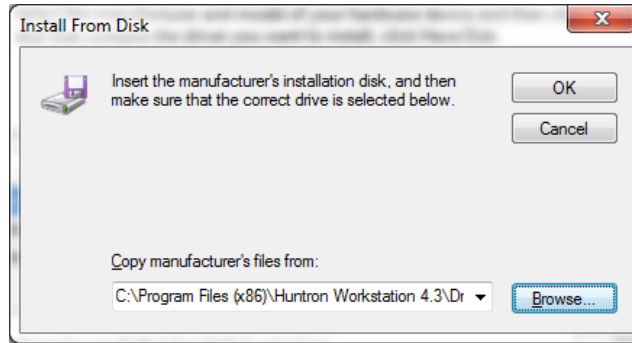
Click the **Browse** button to select the location of the correct driver.



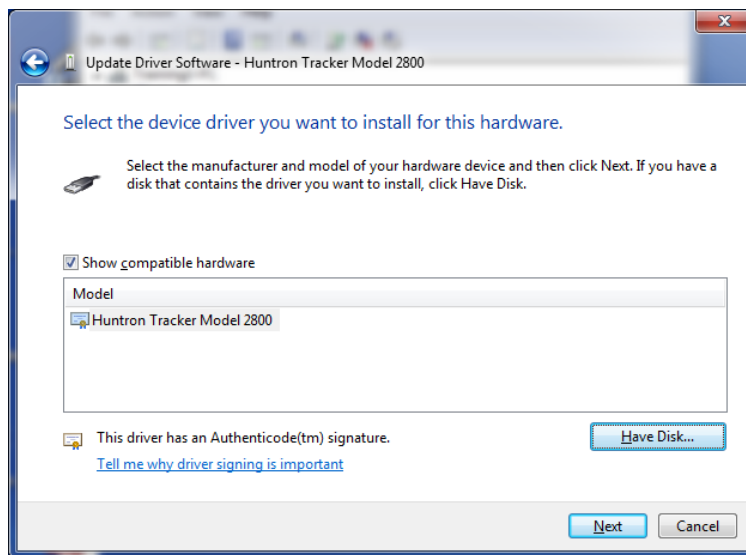
Browse to the file located at “**C:\Program Files\Huntron Workstation 4.3\Drivers\huntrontracker.inf**” as shown in the image below. If you are using 64bit Windows use “**Program Files (x86)**” instead of “**Program Files**”. Click the **Open** button to select the “**huntrontracker.inf**” file.



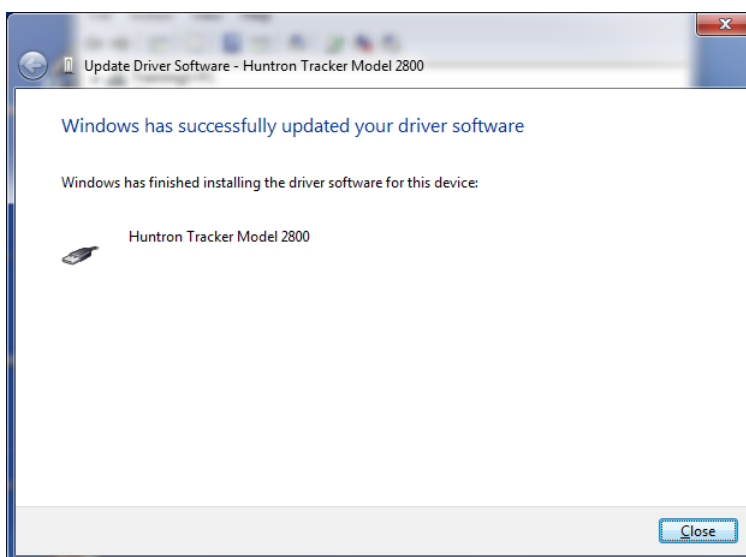
Make sure the file path looks correct then click the **OK** button to begin the driver installation.



You will see the Huntron Tracker 2800 hardware driver listed. Click the **Next** button to continue.

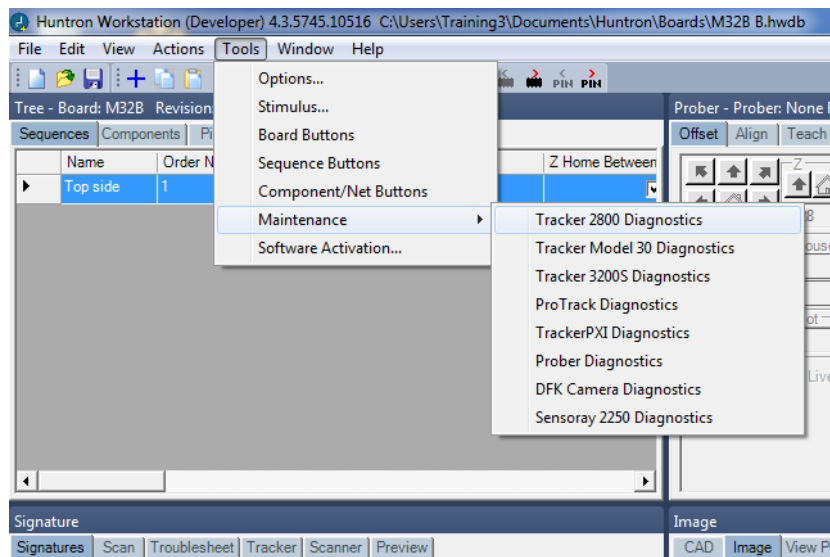


The hardware driver should install and display the window shown below. Click the **Close** button and the exit from the Windows Device Manager.

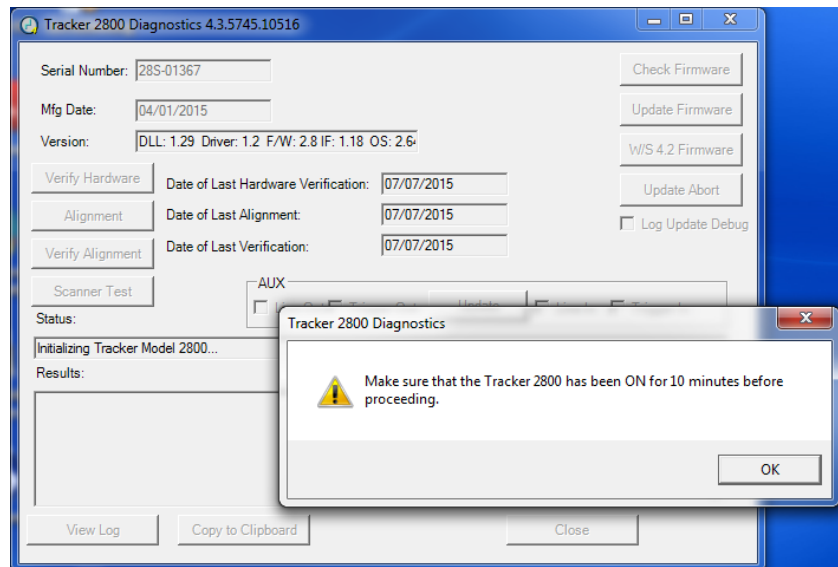


Installing the Updated Tracker 2800/2800S Firmware

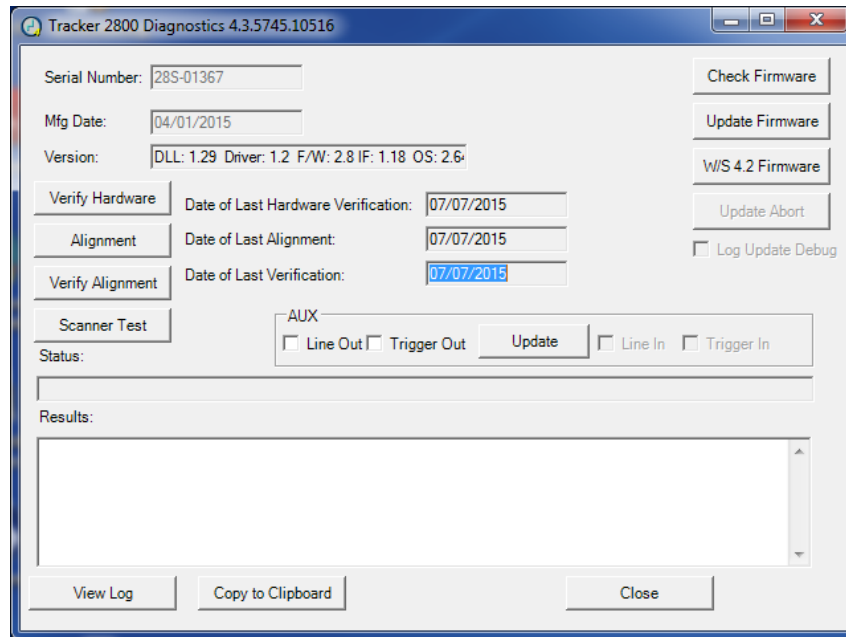
Your Tracker 2800/2800S should already be powered ON from the previous procedure. Start the Huntron Workstation version 4.3 software. Browse to the **Tools** menu and select **Maintenance/Tracker 2800 Diagnostics** as shown below.



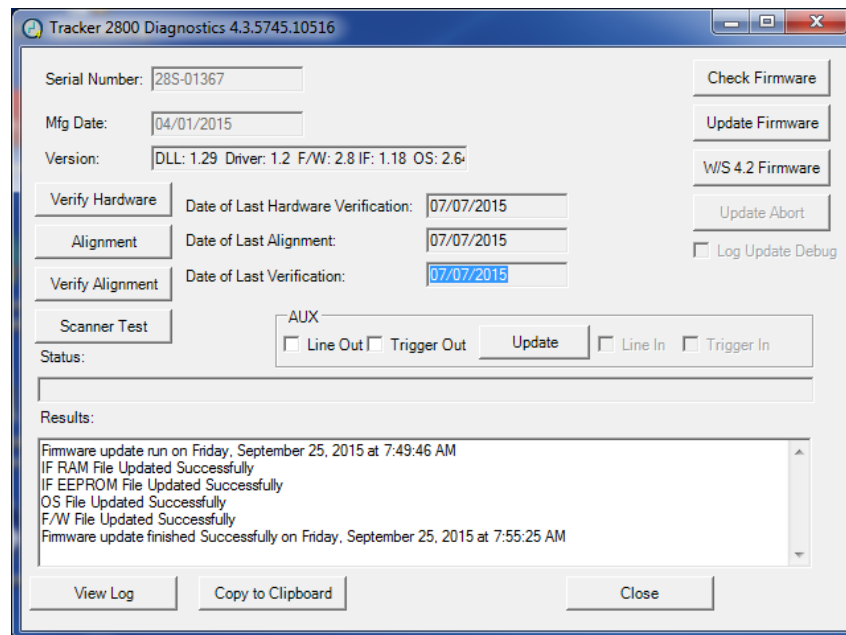
Click the **OK** button if your Tracker has been powered ON for 10 minutes. This is just to ensure that the internal electronics are at a nominal operating temperature.



Click the **Update Firmware** button to begin the new firmware upload. You will see a series of status messages displayed in the Results field. This process can take several minutes. DO NOT power off the unit during the update process.

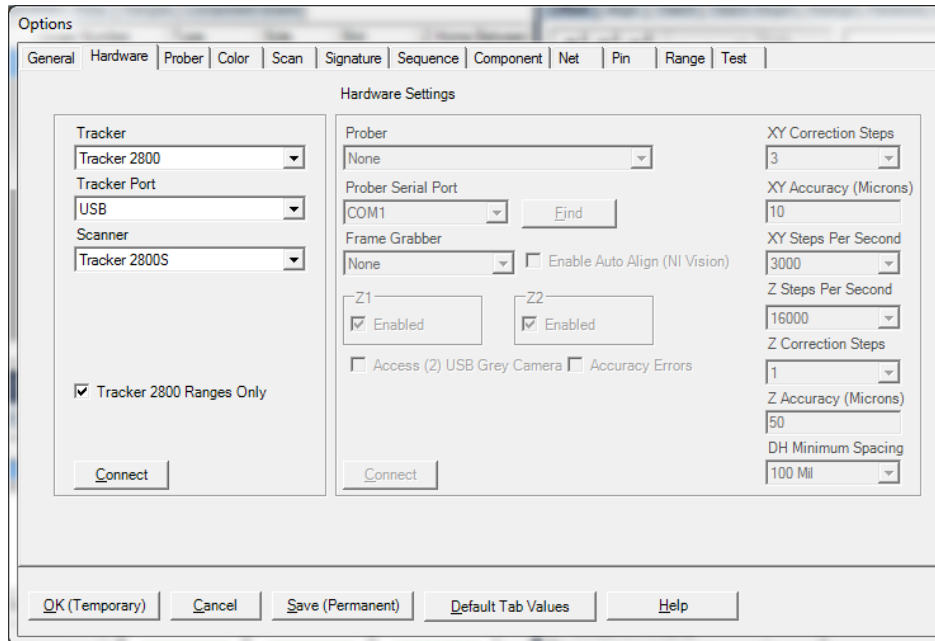


When the firmware update is complete you should see the messages in the Results field shown below.

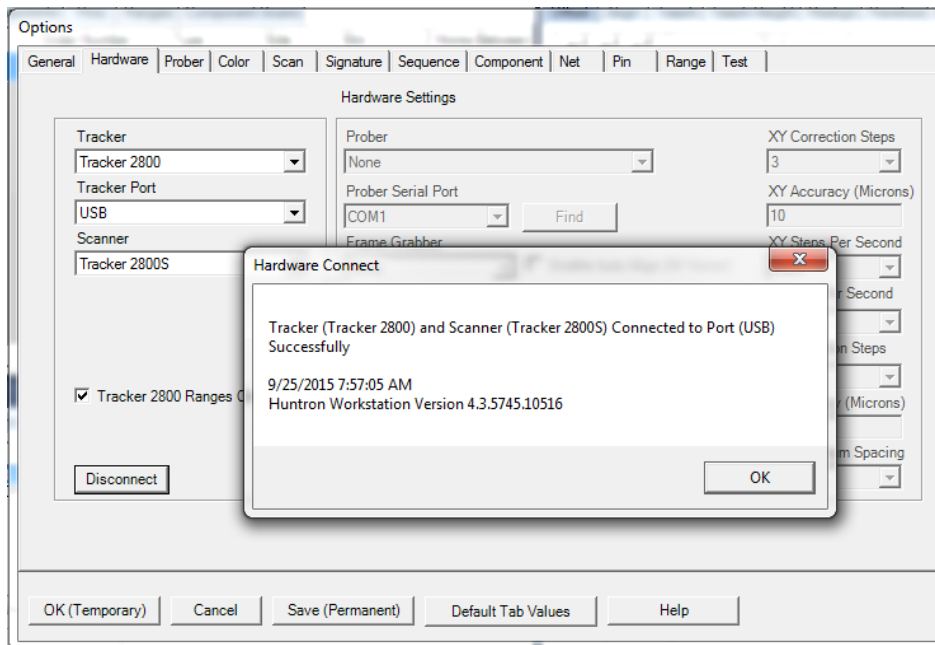


Click the **Close** button to exit the Tracker 2800 Diagnostics.

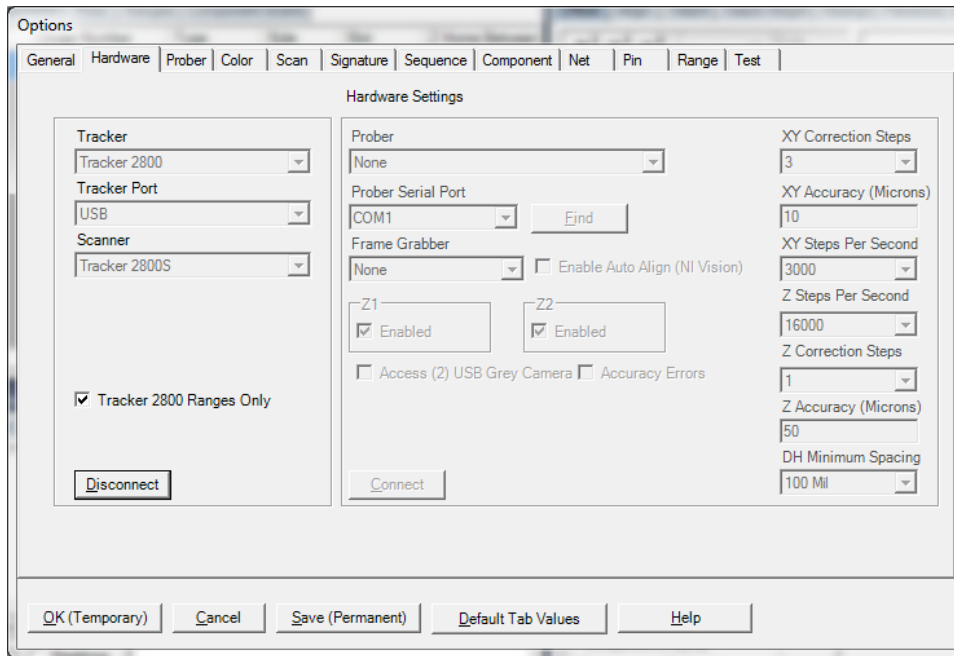
Return to Huntron Workstation and select the **Tools menu/Options**. Select the **Hardware tab** and select **Tracker 2800** from the **Tracker** menu and **USB** from the **Tracker Port** menu. If you are using a Tracker 2800S, select the Tracker 2800S from the **Scanner** menu. Click the **Connect** button to connect to your hardware.



You should see a message indicating that the connection was successful. Click the OK button to close the message.



The Connect button should now be labelled **Disconnect**. Click the **Save (Permanent)** button to save the current hardware configuration.

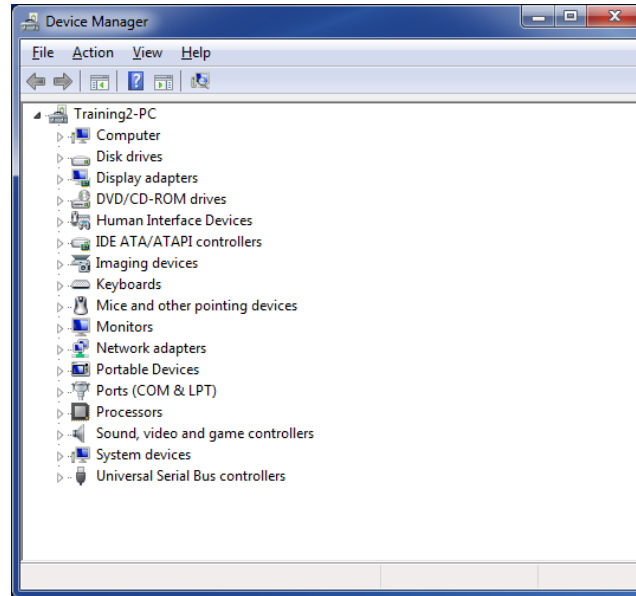


The updates to your Tracker 2800/2800S are now complete.

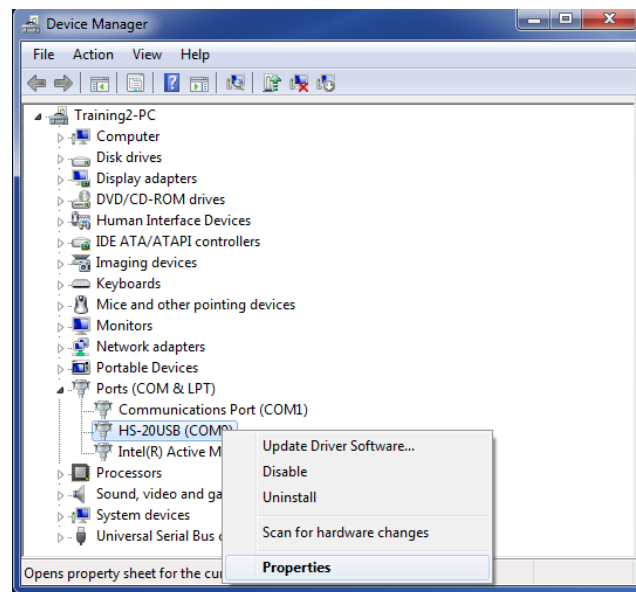
Installing Updated Motor Control Drivers for Access Probers

Access Probers will perform better with Workstation 4.3 when the new hardware drivers supplied with this version are installed.

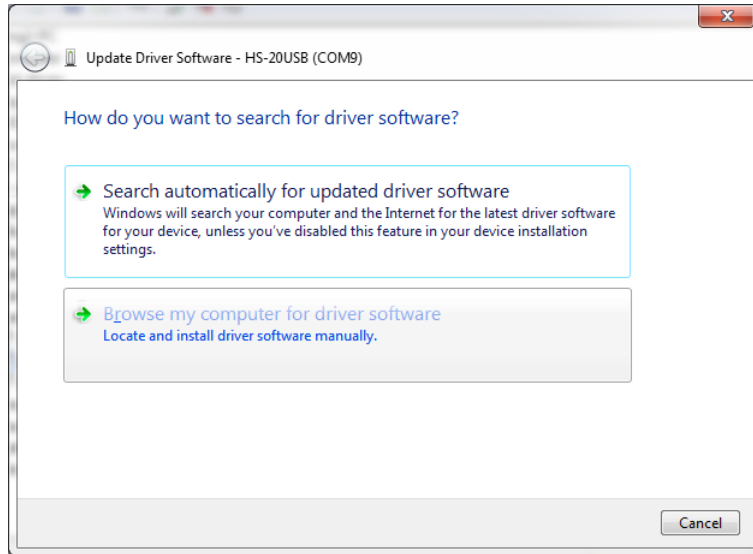
Open the **Windows Device Manager** (contact Huntron or perform a web search if you do not know how to locate the Device Manager).



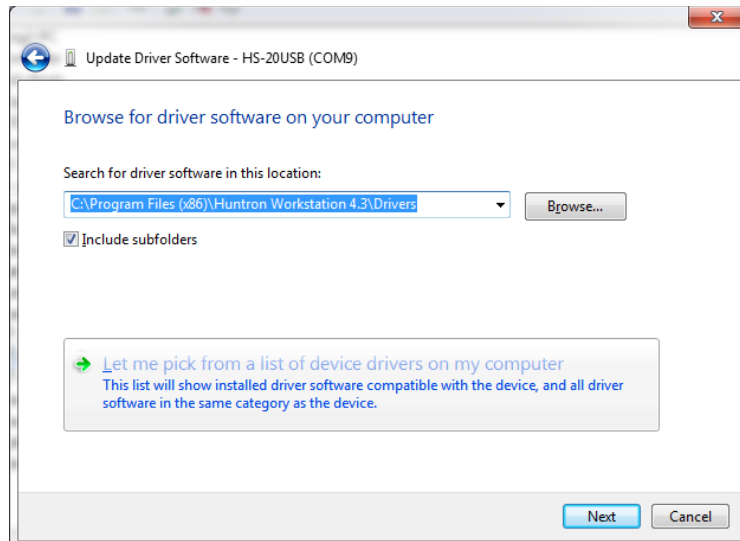
Open the **Ports** folders and locate the HS-20USB device. Right-click the HS20USB device and select **Update Driver Software**.



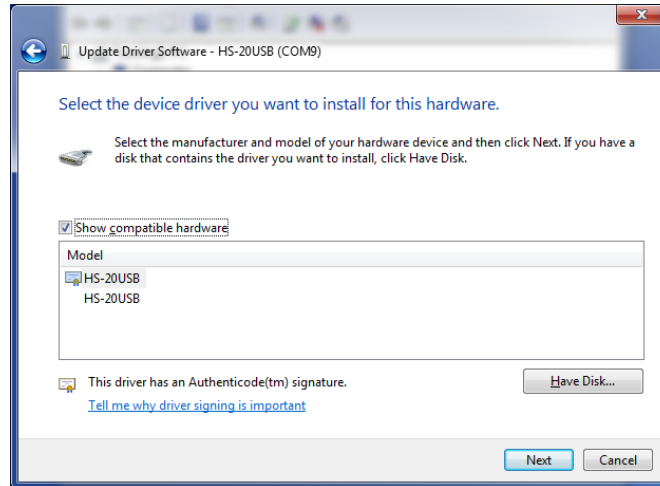
Select the option to **“Browse my computer for driver software”** as shown below.



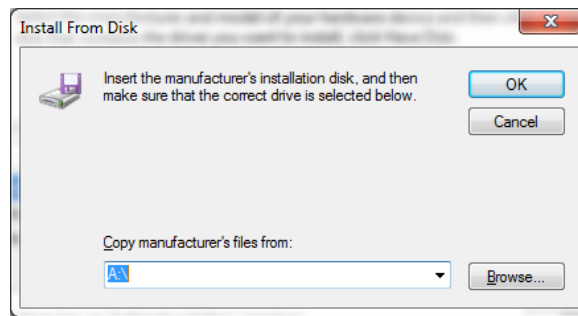
Select the option to **“Let me pick from a list of device drivers on my computer”**.



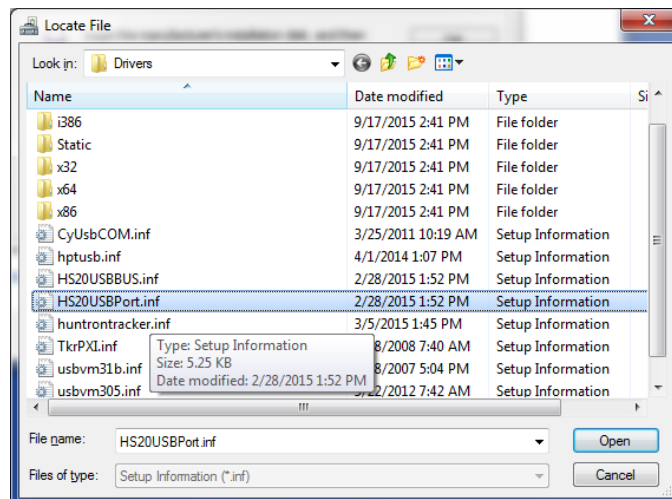
Select the **Have Disk...** button as shown below.



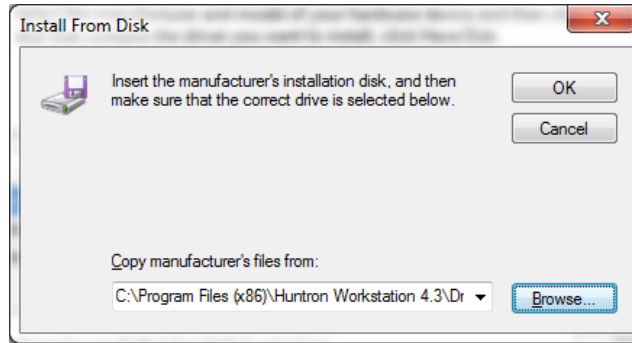
Click the **Browse** button to select the location of the correct driver.



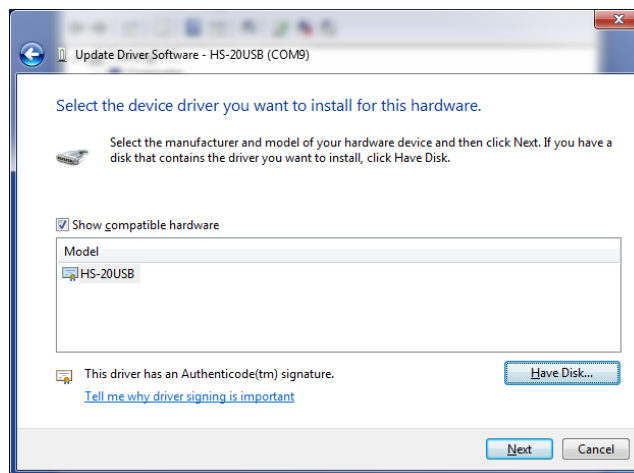
Browse to the file located at "**C:\Program Files\Huntron Workstation 4.3\Drivers\HS20USBPort.inf**" as shown in the image below. If you are using 64bit Windows use "**Program Files (x86)**" instead of "Program Files". Click the **Open** button to select the "HS20USBPort.inf" file.



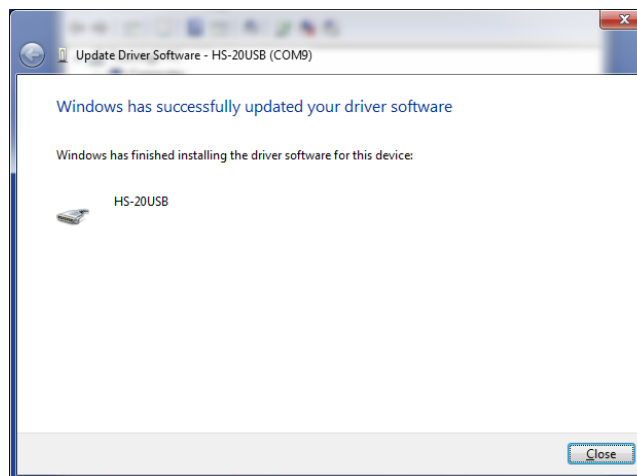
Make sure the file path looks correct then click the **OK** button to begin the driver installation.



You will see the HS-20USB hardware driver listed. Click the **Next** button to continue.

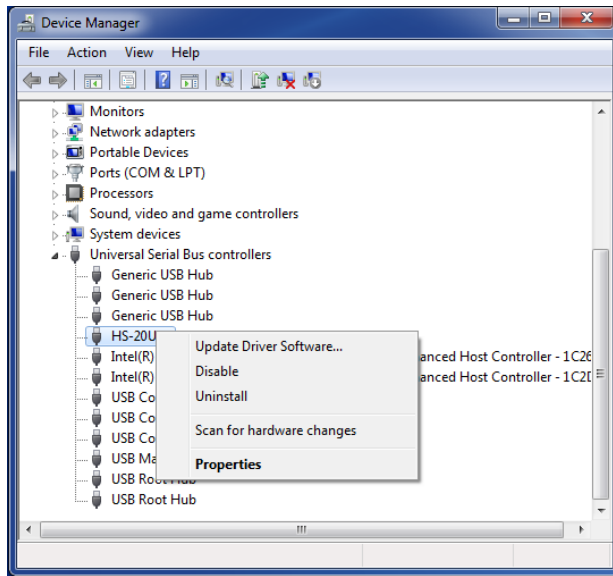


The hardware driver should install and display the window shown below.

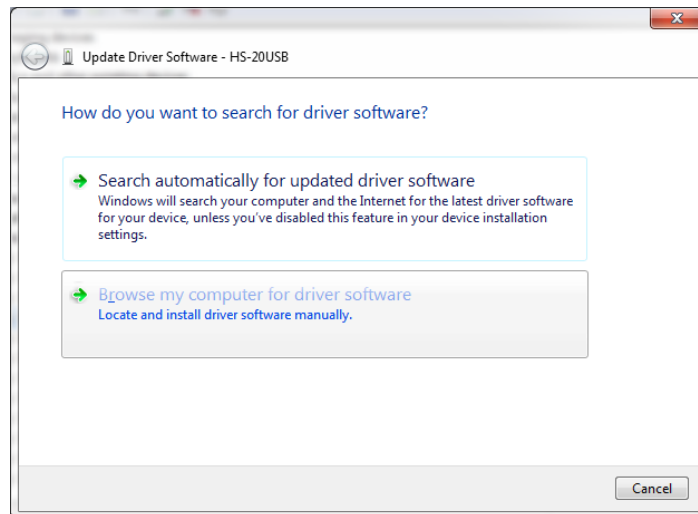


Click the **Close** button and return the Windows Device Manager.

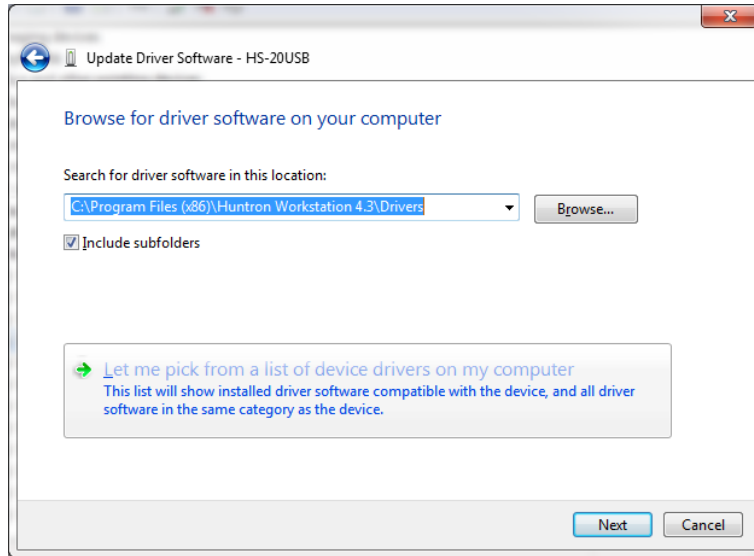
Open the **Universal Serial Bus controllers** folders and locate the HS-20USB device. Right-click the HS20USB device and select **Update Driver Software**.



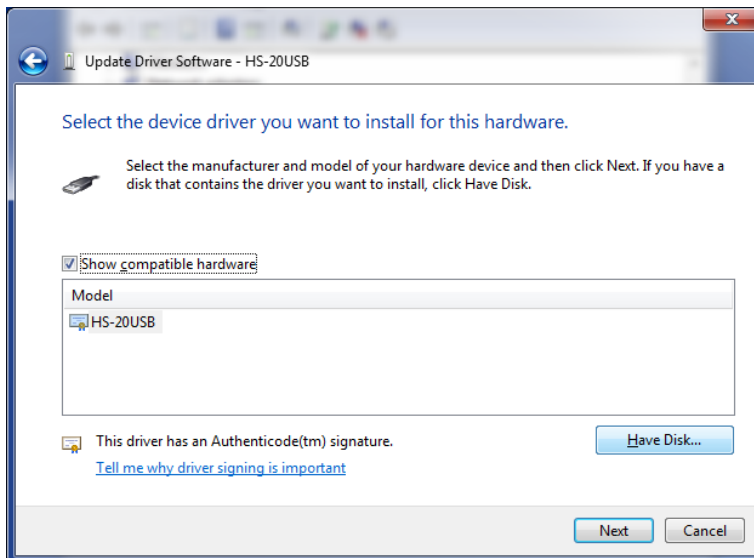
Select the option to **“Browse my computer for driver software”** as shown below.



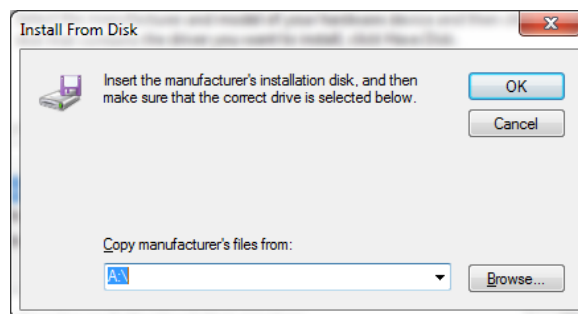
Select the option to “Let me pick from a list of device drivers on my computer”.



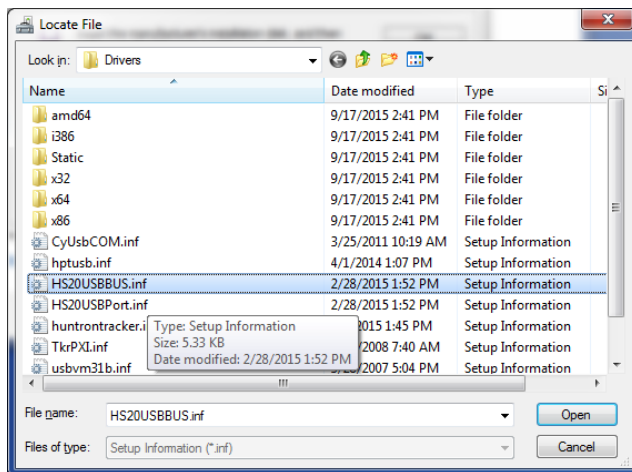
Select the **Have Disk...** button as shown below.



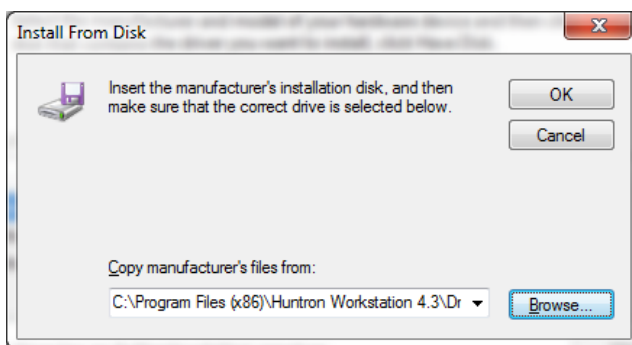
Click the **Browse** button to select the location of the correct driver.



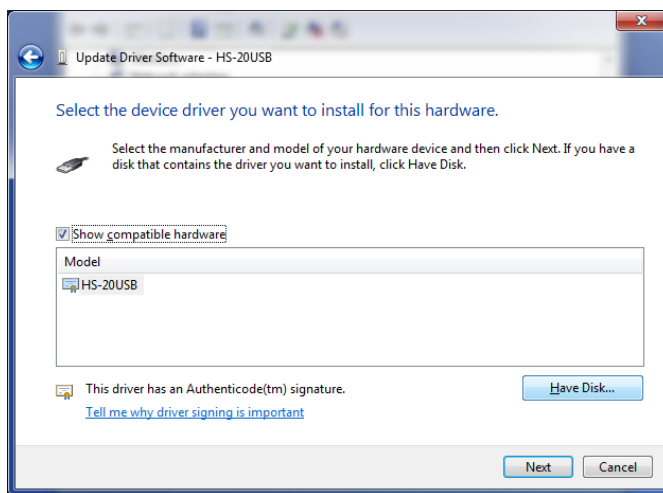
Browse to the file located at “C:\Program Files\Huntron Workstation 4.3\Drivers\HS20USBBUS.inf” as shown in the image below. If you are using 64bit Windows use “Program Files (x86)” instead of “Program Files”. Click the **Open** button to select the “HS20USBBUS.inf” file.



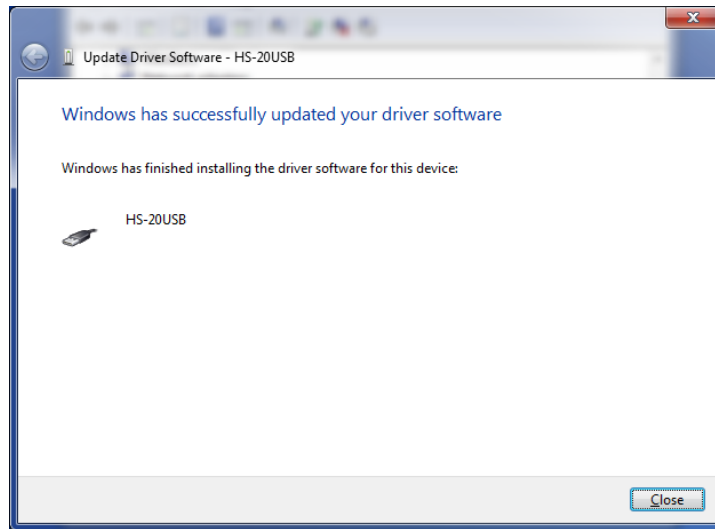
Make sure the file path looks correct then click the **OK** button to begin the driver installation.



You will see the HS-20USB hardware driver listed. Click the **Next** button to continue.



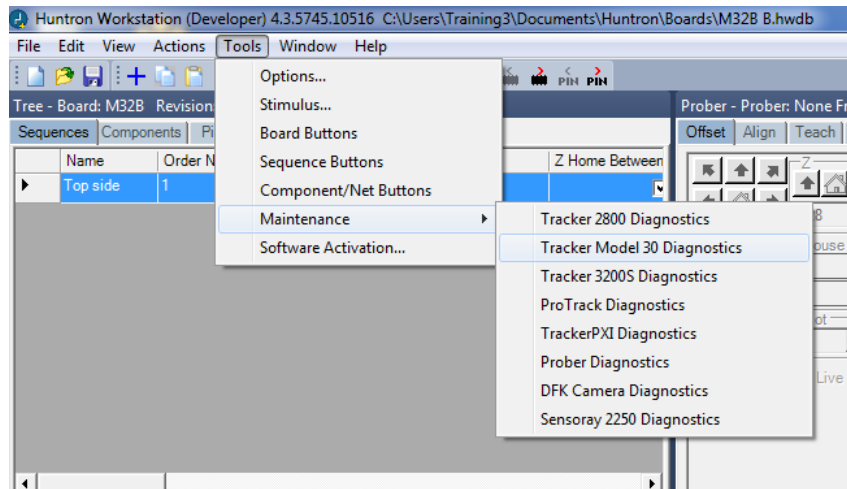
The hardware driver should install and display the window shown below. Click the **Close** button and the exit from the Windows Device Manager.



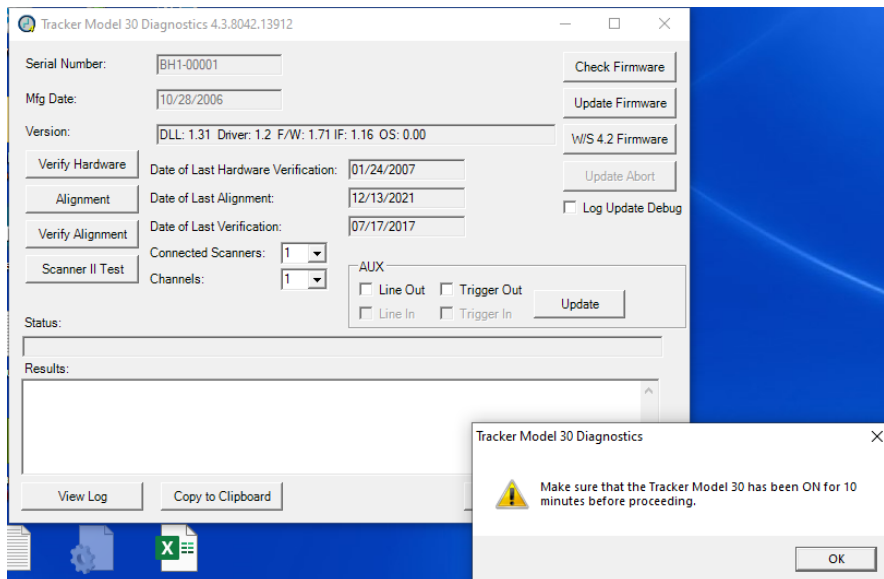
Additional Note for Huntron Access Prober users: When you installed the Workstation 4.3 you were prompted to install Camera Drivers for your Access Prober. If you did not install these software packages, we recommend you do so. This will install the latest versions of the software from their manufacturers.

Tracker Model 30 Firmware Back to 4.2

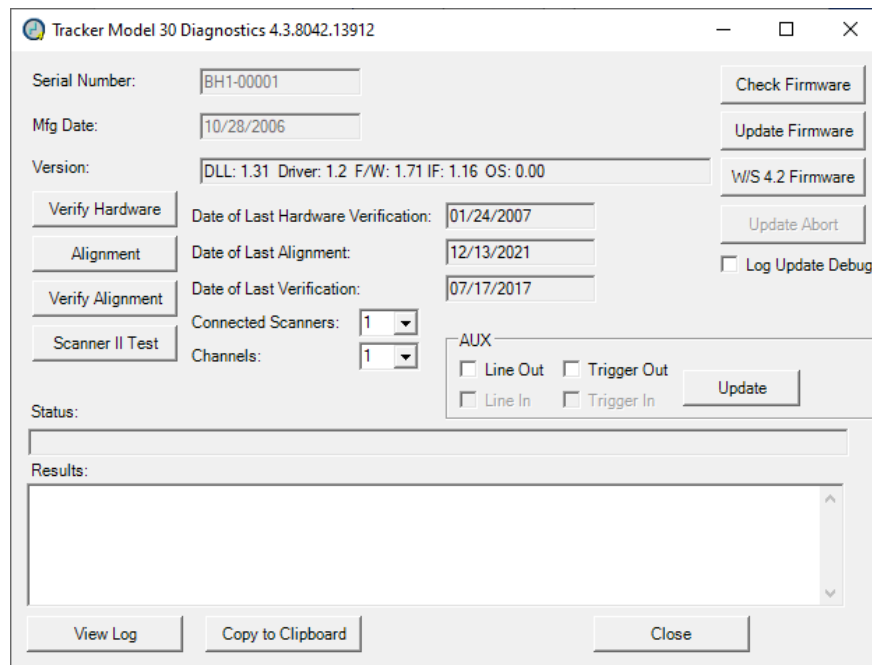
Your Tracker Model 30 should be powered ON. Start the Huntron Workstation version 4.3 software. Browse to the **Tools** menu and select **Maintenance/Tracker Model 30 Diagnostics** as shown below. Access Probers with an embedded Access Tracker use these same instructions.



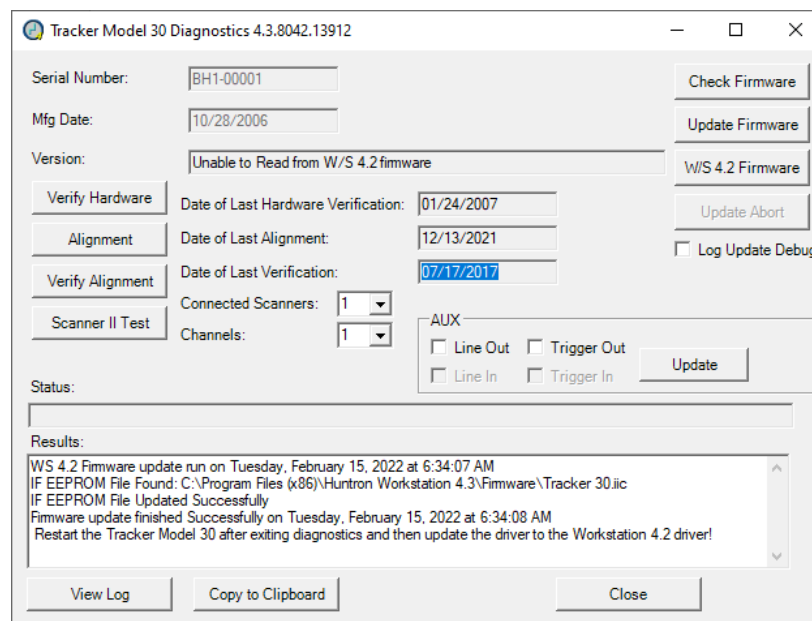
Click the **OK** button if your Tracker has been powered ON for 10 minutes. This is just to ensure that the internal electronics are at a nominal operating temperature.



Click the **WS 4.2 Firmware** button to begin the new firmware upload. You will see a series of status messages displayed in the Results field. **DO NOT** power off the unit during the update process.



When the firmware update is complete you should see the messages in the Results field shown below.

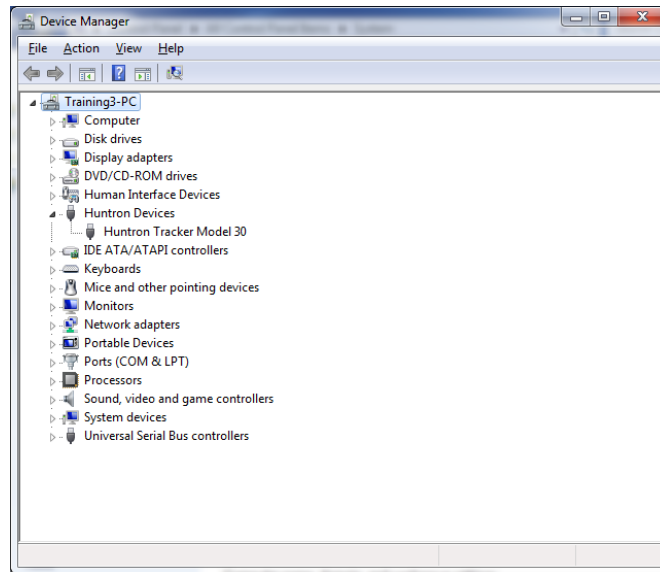


Click the **Close** button to exit the Tracker Model 30 Diagnostics and turn off the Tracker Model 30.

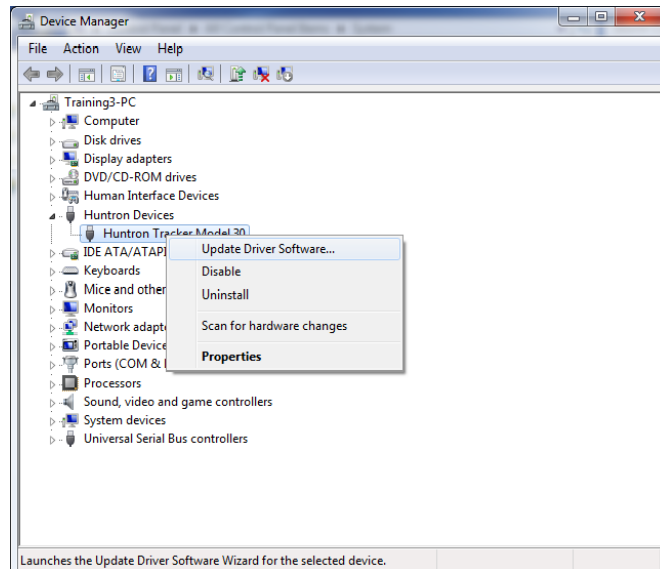
Connect the Model 30 to a PC with version 4.2 installed. If the Tracker does not operate correctly. See Tracker Model 30 Load 4.2 Driver instructions below.

Tracker Model 30 Load 4.2 Driver

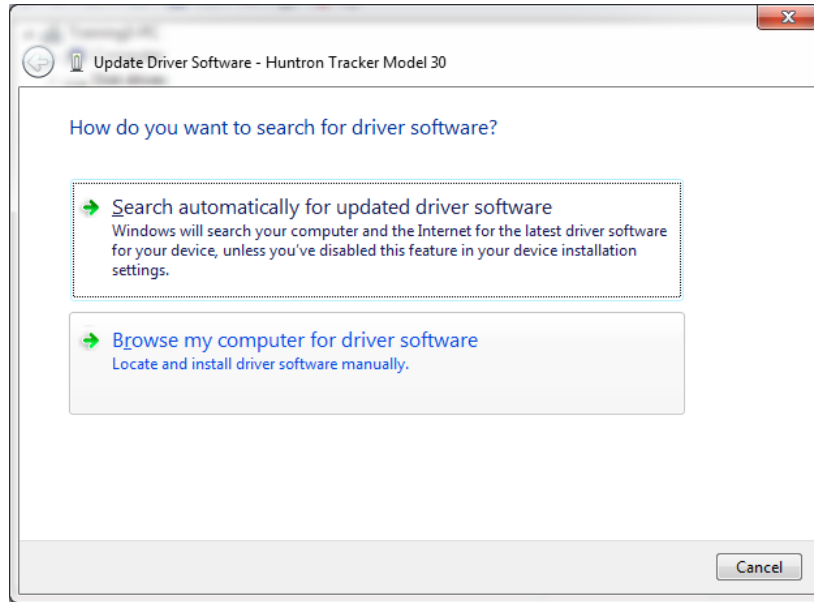
Open the **Windows Device Manager** (contact Huntron or perform an internet search if you do not know how to locate the Device Manager). Access Probers with an embedded Access Tracker use these same instructions.



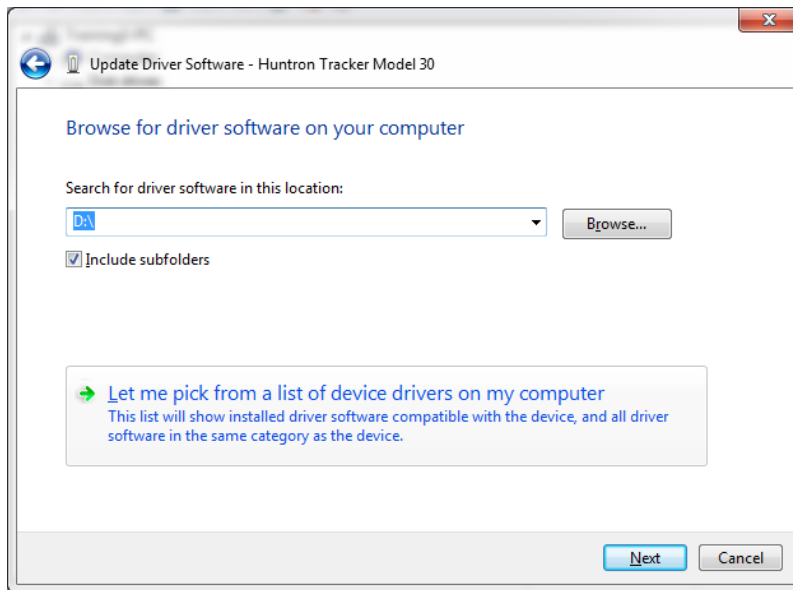
Locate the device for the Tracker Model 30. It may be "Unknown Device". To verify it is the correct device, turn off the Tracker Model 30 and back on. The device that unloads and reloads in Device manager is the correct device. Right-click the device and select **Update Driver Software** from the menu as shown below.



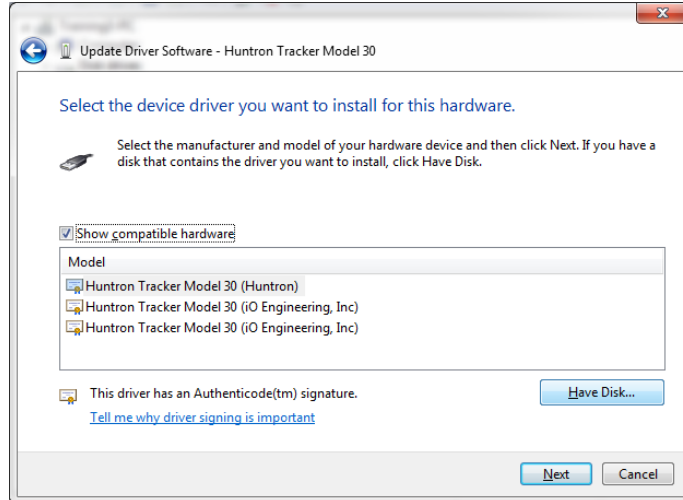
Select the option to **“Browse my computer for driver software”** as shown below.



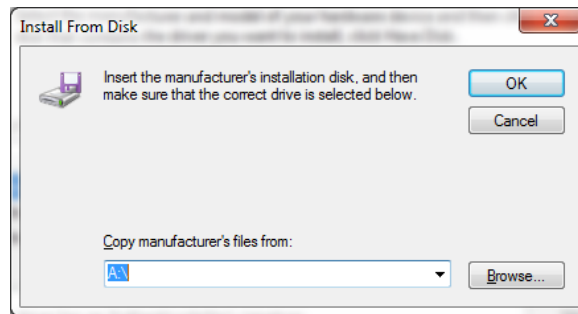
Select the option to **“Let me pick from a list of device drivers on my computer”**.



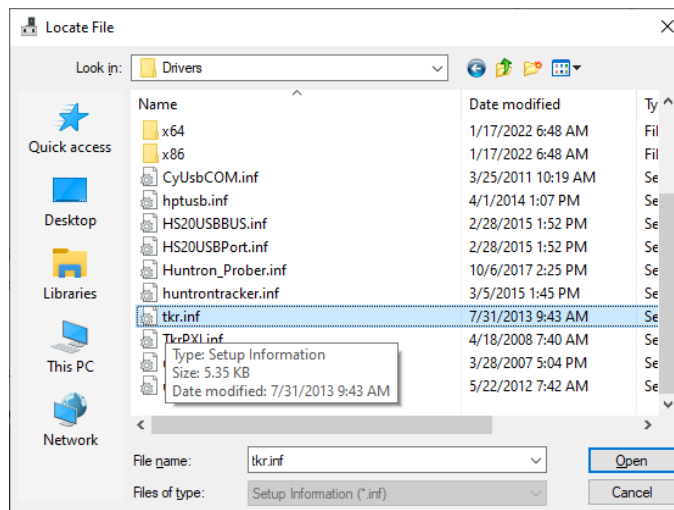
Select the **Have Disk...** button as shown below.



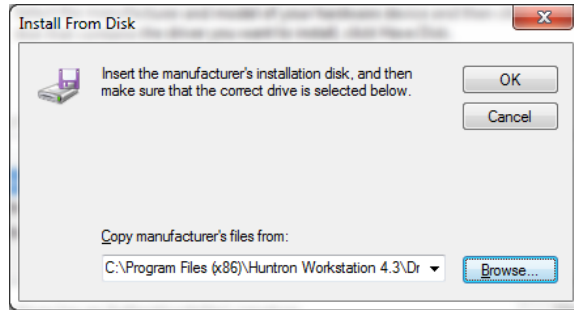
Click the **Browse** button to select the location of the correct driver.



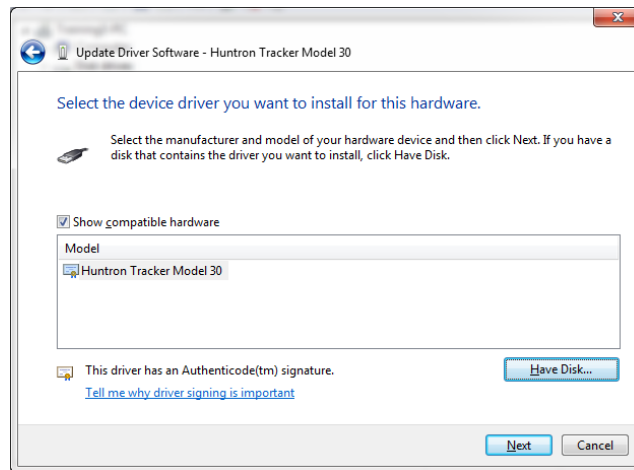
Browse to the file located at either "**C:\Program Files (x86)\Huntron Workstation\Drivers\tkr.inf**" or "**C:\Program Files (x86)\Huntron Workstation 4.3\Drivers\4-2 Drivers\tkr.inf**" as shown in the image below. Click the **Open** button to select the "tkr.inf" file.



Make sure the file path looks correct then click the **OK** button to begin the driver installation.



You will see the Huntron Tracker Model 30 hardware driver listed. Click the **Next** button to continue.



The hardware driver should install and display the window shown below. Click the **Close** button and the exit from the Windows Device Manager.

