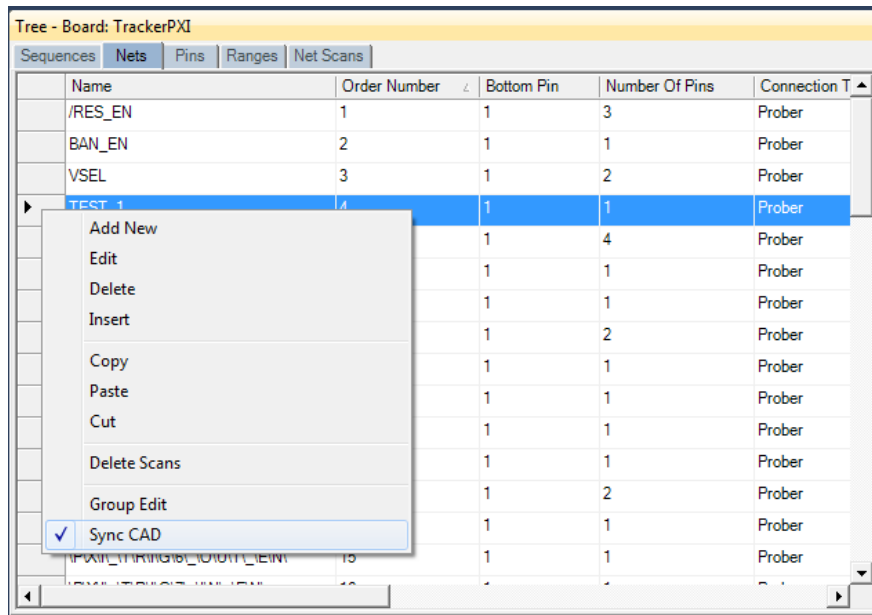


Huntron Workstation Sync CAD Feature

The Huntron Workstation software has the ability to link (or “sync”) to CAD data generated during the CAD import process. This function is used in conjunction with the Unisoft ProntoVIEW-MARKUP software to display the location of Components or Nets selected in the Tree pane.

Using Sync CAD

The Sync CAD function is available at two levels in the Tree pane. In a Component based Sequence, you can **right-click** the row header (the area to the left with the black arrow) for a Component or Component Pin and select **Sync CAD**. In a Net based Sequence, you can **right-click** the row header for a Net or Net Pin and select **Sync CAD**. The image below shows the Sync CAD function being selected for a Net.

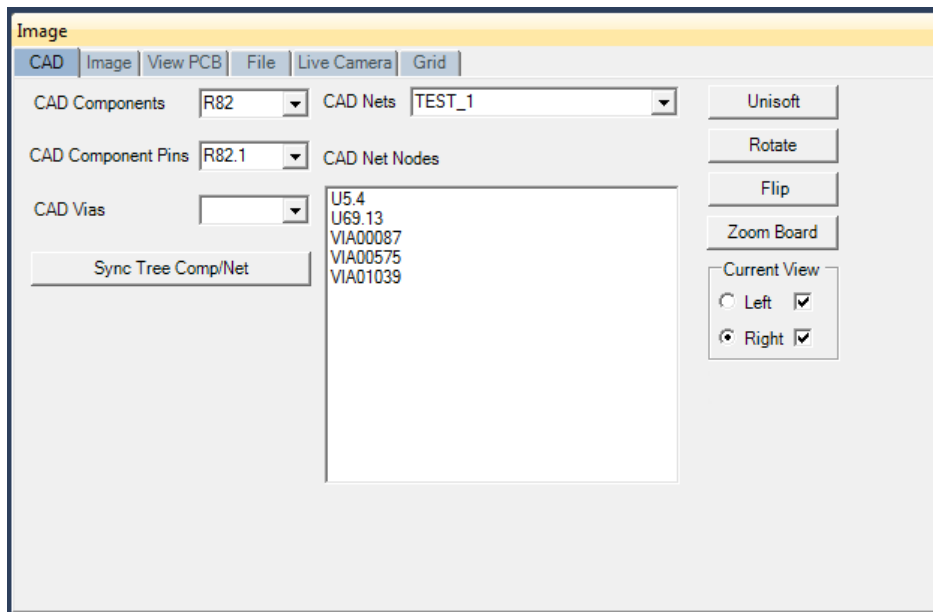


Right-click the row header and select Sync CAD

The Sync CAD check mark indicates that the function will stay enabled as you select other nets or components in the list. You can disable the Sync CAD function by right-clicking and selecting Sync CAD again.

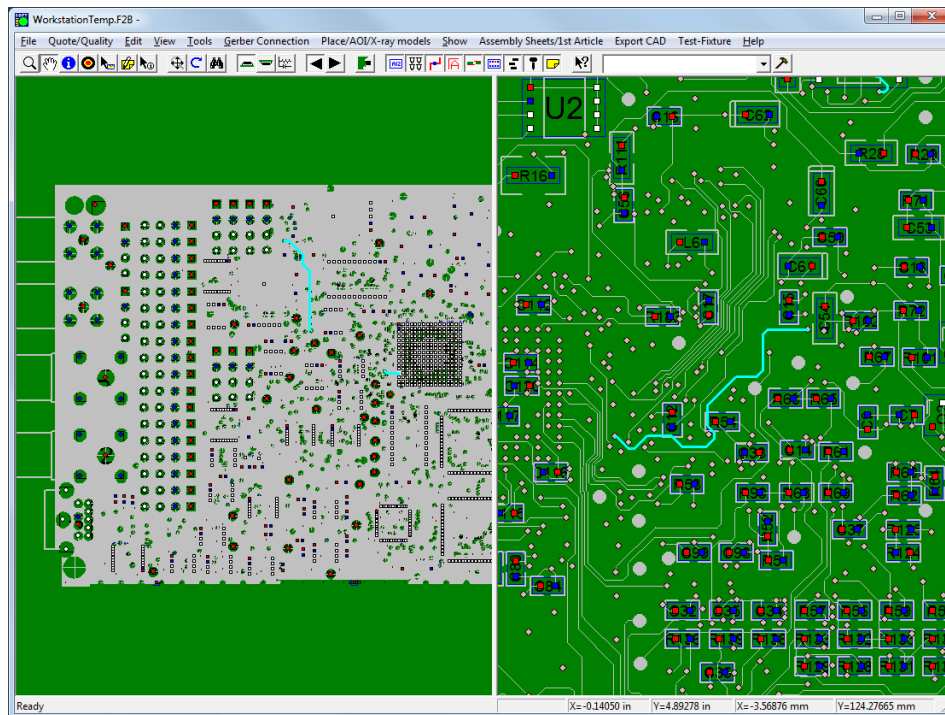
When the Sync CAD function is used, the selected item will be displayed in the **Image pane/CAD tab** window showing the Net name (or Component name if selected from a component based Sequence) and the connected nodes (pins).

You can also select Nets or Components in the Tree pane by selecting the item in the CAD tab window and clicking the **Sync Tree Comp/Net** button.



Selections made in the Tree pane are displayed CAD tab window

Click the **Unisoft** button to launch the ProntoVIEW-MARKUP software. ProntoVIEW-MARKUP will load the XML and F2B files used to create the test and display the CAD layout. As you select Nets or Components in the Tree pane, the net or component will be highlighted in ProntoVIEW-MARKUP.



ProntoVIEW-MARKUP displaying the net selected by the Sync CAD function

Having a graphic display of net and component locations can greatly assist you in PCB troubleshooting. There are additional controls for ProntoVIEW-MARKUP in the CAD tab window such as Rotate (rotate view), Flip (flip view), Zoom Board (zoom to show entire PCB) and Current View controls (controls left

and right displays). You can also use the functions directly in the ProntoVIEW-MARKUP software to obtain more information and control what is displayed (i.e. traces, labels, pins, silk screens, etc.). The Information tool (blue circle with the “i”) in the tool bar is particularly useful as you can click on a component, pin or via to display detailed information about the selected entity.

The ProntoVIEW-MARKUP software is best utilized by using a computer with dual monitors. Huntron Workstation can be displayed on one monitor and ProntoVIEW-MARKUP on the second monitor.

For more information on using Huntron CAD Tools for test creation, download the CAD Tools tutorial from the Huntron web site.

Huntron Inc.

800-426-9265; 425-743-3171

www.huntron.com