

Huntron Workstation Store ASCII

The Huntron Workstation software can create ASCII files of test results. The test results are called troublesheets. The ASCII files can be created after a scan or automatically after each sequence scan. The test troublesheet information is appended to the ASCII file.

Contents

- ASCII File Format 2
 - Sequence (one row per sequence) 2
 - Sample file header and data line 2
 - Component/Net (Includes fields above) (one row per component/net)..... 2
 - Sample file header and data line 2
 - Pin (Includes fields above) (one row per pin) 2
 - Sample file header and data line 2
 - Range fields (Includes fields above) (one row per range)..... 2
 - Sample file header and data line 2
- Software Features..... 3
 - Signature Pane -> Troubleshoot Tab 3
 - Tools -> Options 5
 - Scan Tab..... 5
 - Sequence Tab 6
 - Tree Pane -> Sequence Tab 7

ASCII File Format

Below are examples of the ASCII output test. Files are created using the ASCII Store function. Use Options->Scan ASCII Store Delimiter and ASCII Store String Delimiter to set the delimiting characters. Examples shown tab delimited with double-quote string delimiters.

Sequence (one row per sequence)

Board, Sequence, Serial Number, User, Date, Time, Problem, Solution, Passed/Failed

Sample file header and data line

"Board"	"Sequence"	"Serial Number"		"Operator"	"Date Time"	"Problem"	"Solution"	"Pass/Fail"
"TrackerPXI"	"Demo"	"2"	""	"5/24/2010 6:54:53 AM"	"Problems Field"	"Solutions Field"	"Passed "	

Component/Net (Includes fields above) (one row per component/net)

Component/Net, Type, Part Number, Deviation, Area, Passed/Failed

Sample file header and data line

"Board"	"Sequence"	"Serial Number"		"Operator"	"Date Time"	"Problem"	"Solution"
"Comp/Net"	"Type"	"Part Number"	"Dev"	"Area"	"Pass/Fail"		
"TrackerPXI"	"Demo"	"2"	""	"5/24/2010 6:54:53 AM"	"Problems Field"	"Solutions Field"	"C96"
"CAPACITOR"	""	"-9"	"0"	"Passed "			

Pin (Includes fields above) (one row per pin)

Pin Name, Deviation, Area, Passed/Failed

Sample file header and data line

"Board"	"Sequence"	"Serial Number"		"Operator"	"Date Time"	"Problem"	"Solution"	"Comp/Net"
"Type"	"Part Number"	"Pin"	"Dev"	"Area"	"Pass/Fail"			
"TrackerPXI"	"Demo"	"2"	""	"5/24/2010 6:54:53 AM"	"Problems Field"	"Solutions Field"	"U29"	
"IC"	""	"1"	"-12"	"0"	"Passed "			

Range fields (Includes fields above) (one row per range)

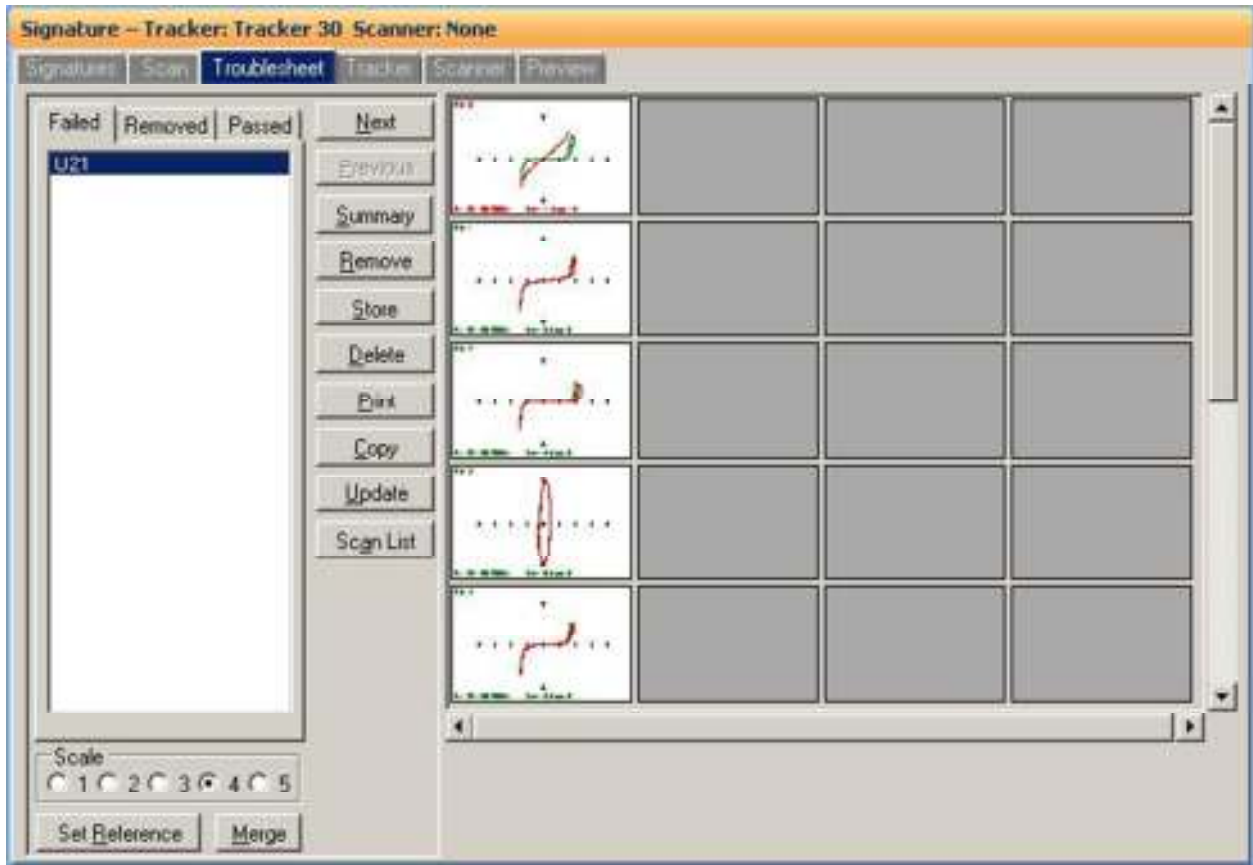
Range Name, Tolerance, Deviation, Area, Passed/Failed

Sample file header and data line

"Board"	"Sequence"	"Serial Number"		"Operator"	"Date Time"	"Problem"	"Solution"	"Comp/Net"
"Type"	"Part Number"	"Pin"	"Range"	"Tolerance"	"Dev"	"Area"	"Pass/Fail"	
"TrackerPXI"	"Demo"	"2"	""	"5/24/2010 6:54:53 AM"	"Problems Field"	"Solutions Field"	"U29"	
"IC"	""	"1"	"3V 10K 500Hz"	"20"	"-20"	"0"	"Passed "	

Software Features

Signature Pane -> Troubleshoot Tab



Click the **Store** button on the Troubleshoot tab to display the Store Troubleshoot dialog.

Store Troubleshoot Dialog



The screenshot shows a dialog box titled "Store Troubleshoot". It contains the following elements:

- Serial Number:** A text box containing "123".
- Store Level:** A dropdown menu with "Sequence" selected.
- Problems:** A text box containing "Low 5V".
- Solutions:** A text box containing "replace C1".
- ASCII File Path:** A text box containing "C:\Users\Vester\Documents\Huntron\Troubl" and a "Browse" button.
- Store Passed:** A checked checkbox.
- Buttons:** "Store ASCII" and "Close" buttons at the bottom.

Click the **Store ASCII** button to save the file to the path specified in the ASCII File Path field.

Store Level

Sets the level of detail included in the ASCII Troubleshoot file

Values: Sequence, Comp/Net, Pin or Range

ASCII File Path

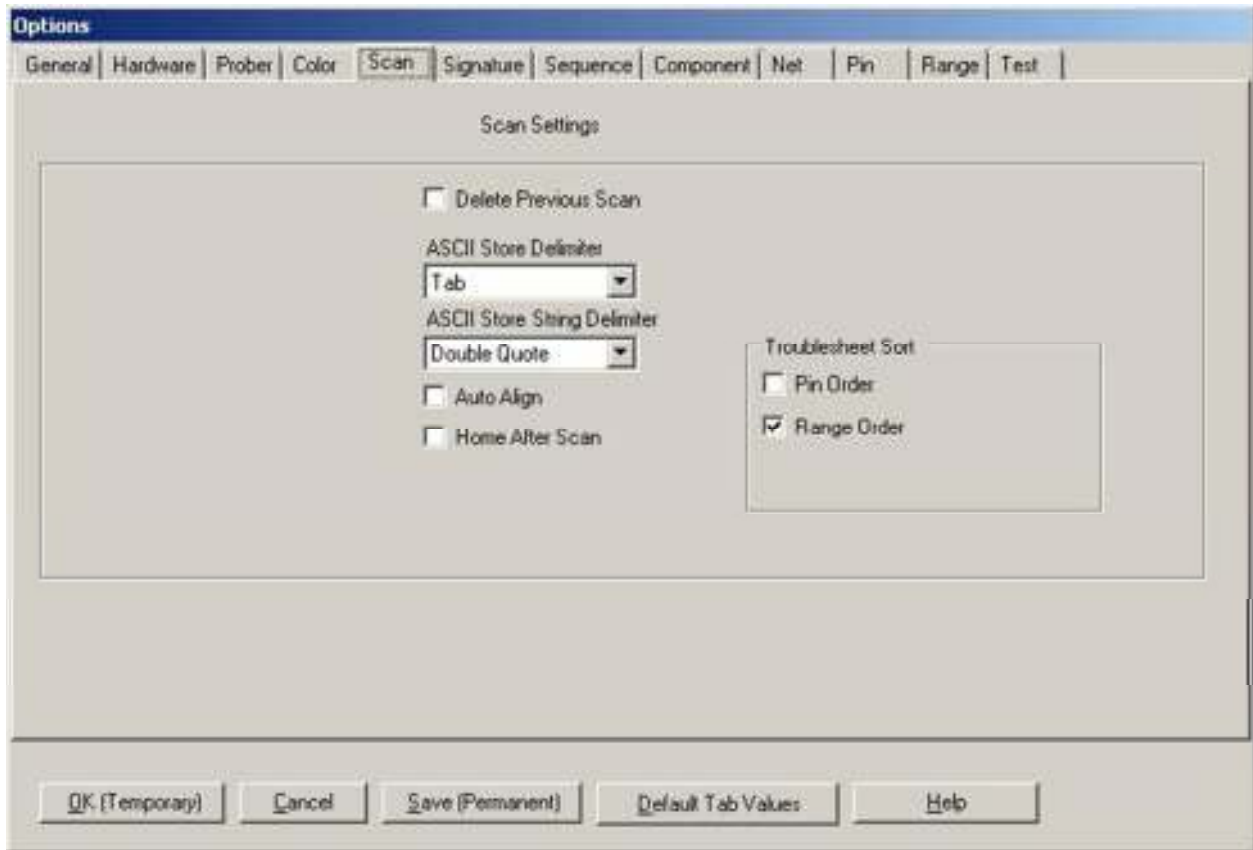
The browse to or enter the file path of the ASCII Troubleshoot file.

Store Passed

Check to store passed scan information or Unchecked not to store passed scan information to the ASCII Troubleshoot file

Tools -> Options

Scan Tab



ASCII Store Delimiter

The character used to delimit Troubleshoot ASCII files

Values: Tab, Comma, Semi-Colon, Space

Default: Tab

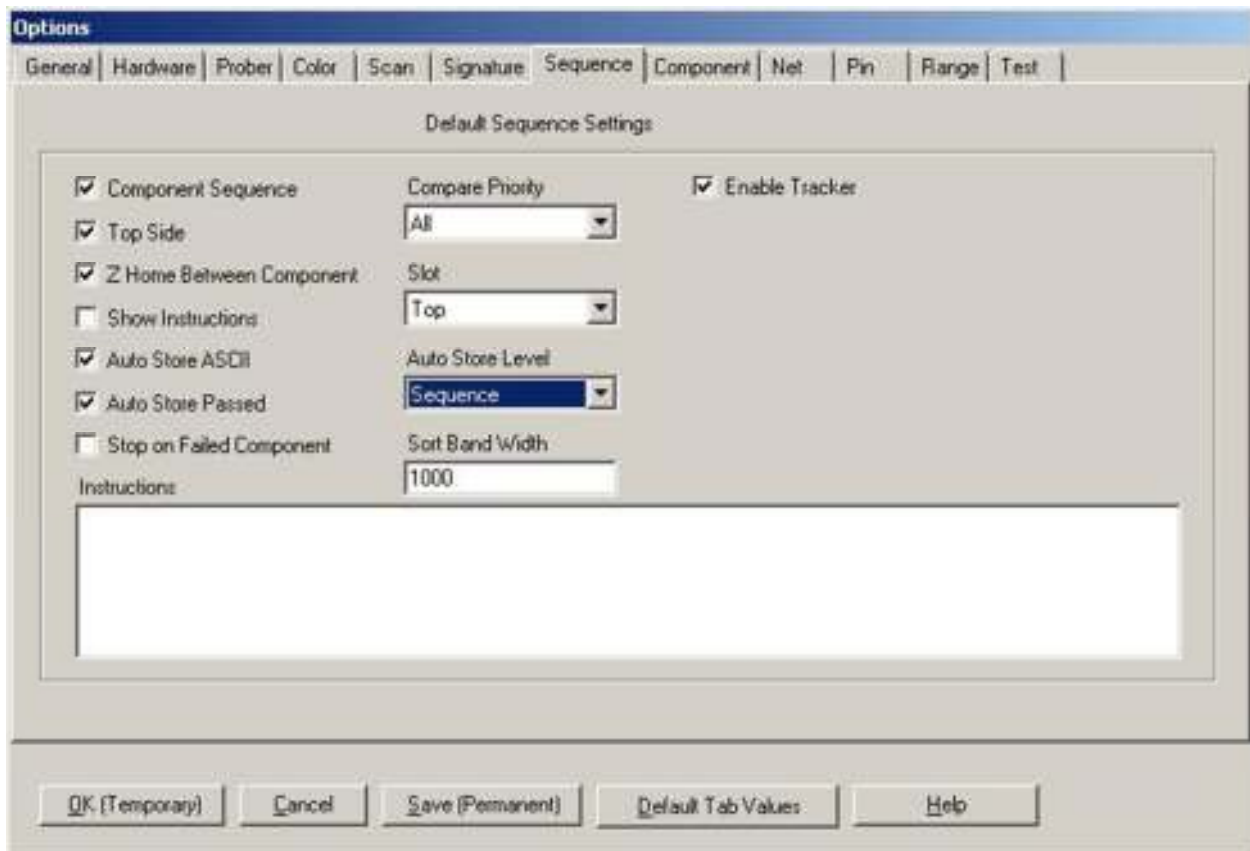
ASCII Store String Delimiter

The character used to delimit Troubleshoot ASCII file strings

Values: None, Single Quote, Double Quote

Default: None

Sequence Tab



Auto Store ASCII

Checked to add lines to the ASCII Troubleshoot file every time a component is scanned, Unchecked to not add to the file.

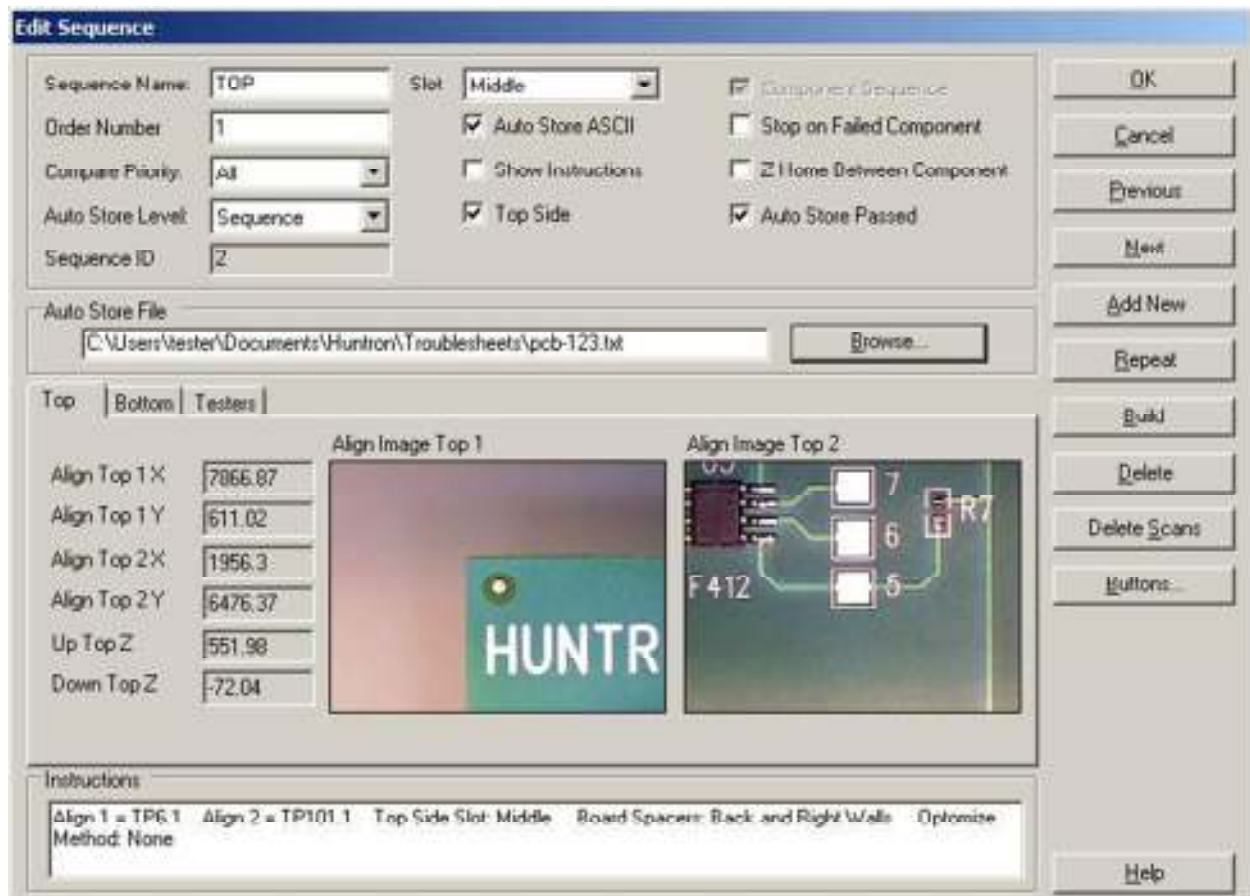
Default: Unchecked

Auto Store Passed

Check to store passed scan information or Unchecked not to store passed scan information to the ASCII Troubleshoot file

Default: Unchecked

Tree Pane -> Sequence Tab



Auto Store ASCII

Checked to add lines to the ASCII Troubleshoot file every time a component is scanned, Unchecked to not add to the file.

Default: Set in Options

Auto Store Level

Sets the level of detail included in the ASCII Troubleshoot file

Values: Sequence, Comp/Net, Pin or Range

Default: Set in Options

Auto Store File

Browse to or enter the file path of the ASCII Troubleshoot file.

Auto Store Passed

Check to store passed scan information or Unchecked not to store passed scan information to the ASCII Troubleshoot file

Default: Set in Options