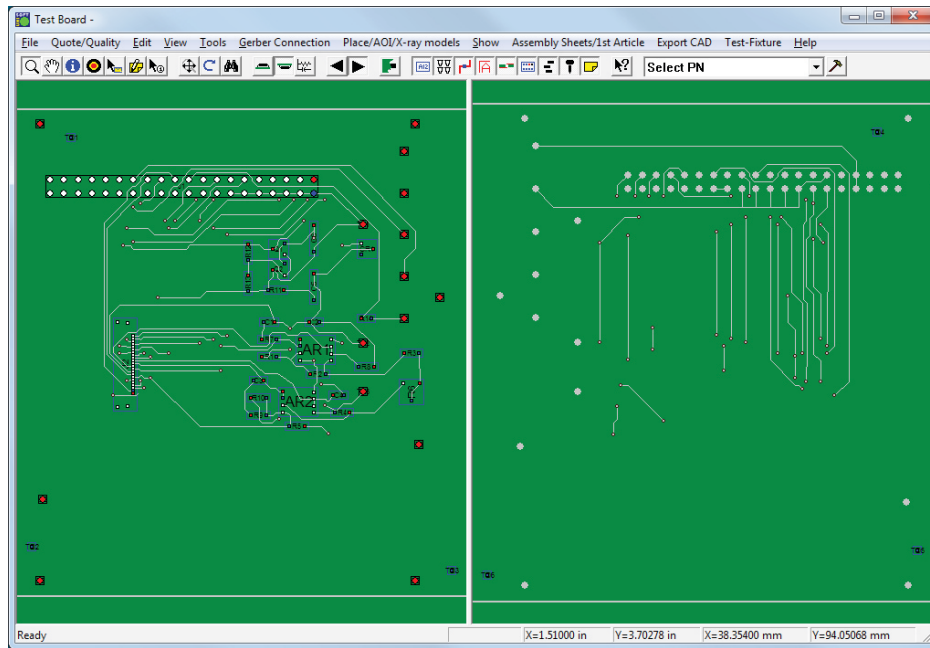


## Huntron Workstation CAD Tools

Use CAD resources to speed test development



Unisoft ProntoVIEW-MARKUP software

If you have CAD layout files available for the circuit boards you troubleshoot with your Huntron system, Huntron CAD Tools are a valuable, time saving, test creation utility when compared to manual test development.

Add Huntron® CAD tools to the Huntron Workstation software to enhance test building and fault isolation. The Huntron Workstation uses the Unisoft ProntoVIEW-Markup software to convert PCB layout files into a standard XML file for import into the Huntron Workstation software.

The full ASCII layout file exported from your CAD layout package is opened in Unisoft ProntoVIEW-Markup where proper alignment points can be selected. An XML file is then created and exported by Unisoft ProntoVIEW-Markup. The Huntron Workstation CAD Import feature builds tests in the Huntron Workstation software from the XML file created from Unisoft ProntoVIEW-Markup. This process adds Sequences to the Board database for each side of the PCB (Top and Bottom). The CAD Import wizard also provides net prioritization, preferred board side, Huntron Prober slot selection and optimization steps for Huntron Access dual head probes.

Two Test Types are supported. The Component Test Type creates a component for each component listed in the XML file including all of the pin information. The NET Test Type creates "nets" of up to 2048 Nodes (pins) with each pin being an access point on a net.

- Saves significant time when developing Workstation tests
- Track failures through the PCB layout
- Tree data syncs to CAD data
- Full version that runs externally from the Huntron Workstation
- Create Component or NET based test structures
- Includes PCB Readers for most popular CAD Layout packages

### Included PCB Readers:

- ACCEL EDA/PCAD 200X - (.pcb)
- Cadence Allegro (Extract) - (.val)
- CADIF - CADStar, Visula, RedacCADIF (.paf)
- Cadon v2 - (.xed)
- CAD Star - (.cdi)
- CELLS/FIXTURES - (.cfg)
- ComputerVision - (.cvi)
- Fabmaster FATF and FAB - (.fatf and .fat)
- FAB All Files - (.fba)
- Fuji Flexia - (.pgo)
- GenCAD - (.cad)
- GenCAM - (.gcm)
- HPGL - (.hpg)
- IPC-2581 - (.cvg)
- IPC 350, 356, 356A - (.ipc)
- Intergraph - (.lst)
- Mentor Neutral File - (.neu)
- ODB++ - (.odb)
- OrCAD Layout Plus - (.min)
- PADS Power/Perform - (.asc)
- PCAD (PDF) Layout - Accel PCAD (.pdf)
- Protel PCB/Altium - (.pro)
- VERIBEST/EIF - Veribest (.vrb)

### Recommended PC requirements:

- PC with 3Ghz or faster processor (2GHz if Multi-Core)
- Microsoft Windows 7 or 8 (64 bit)
- 8GB RAM or higher
- 1920px by 1080px resolution dual monitors
- Keyboard and mouse