

PCI-GPIB Settings for Tracker 5100DS Using Windows 2000

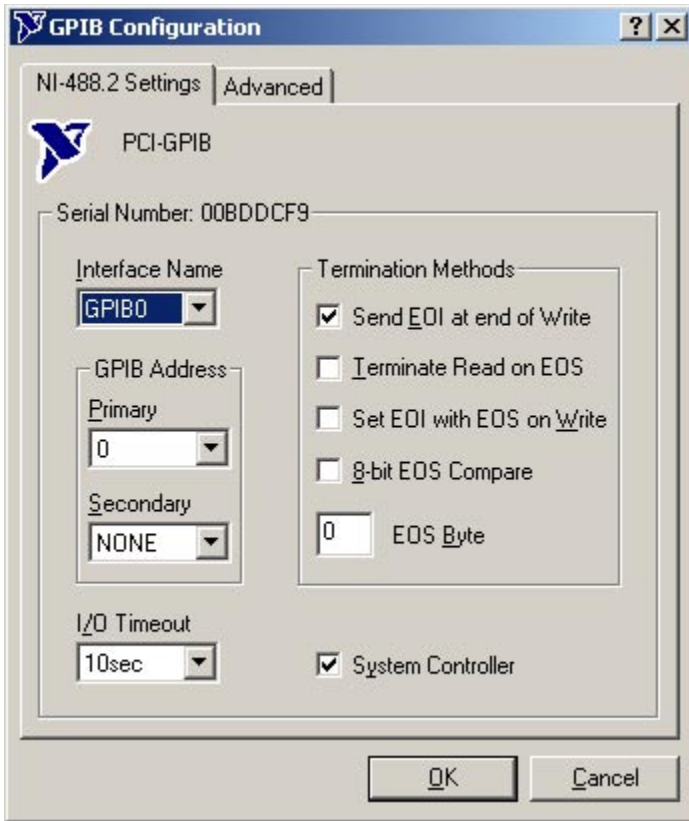


Figure 1

Install National Instruments Measurement and Automation software.

Install PCI-GPIB card into empty PCI slot in PC.

Check configuration of PCI-GPIB card by starting the NI Measurement and Automation software and selecting the Properties for the installed PCI-GPIB card (by default named GPIB0).

Refer to the settings shown in Figure 1 and figure 2.

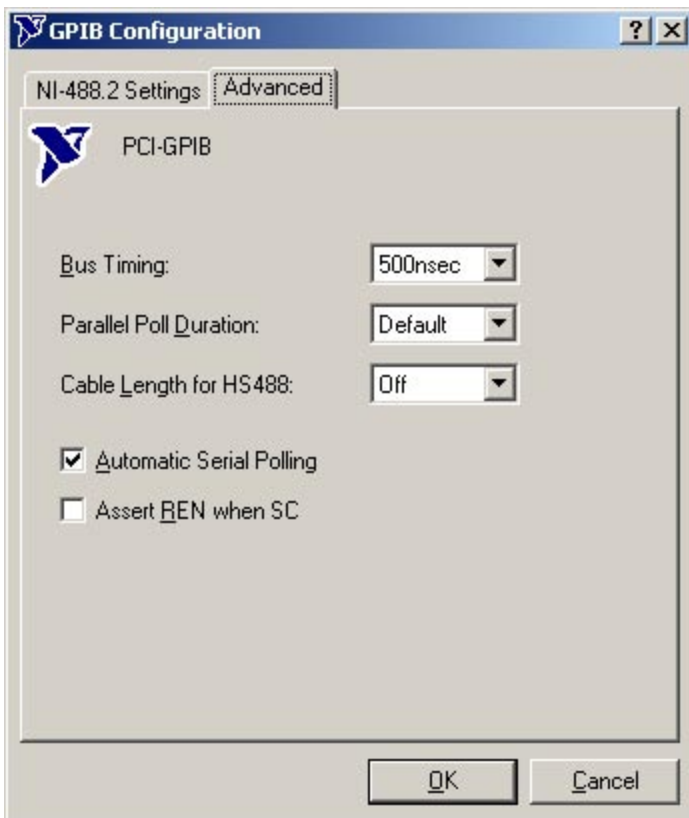


Figure 2

PCI-GPIB Settings for Tracker 5100DS Using Windows 2000

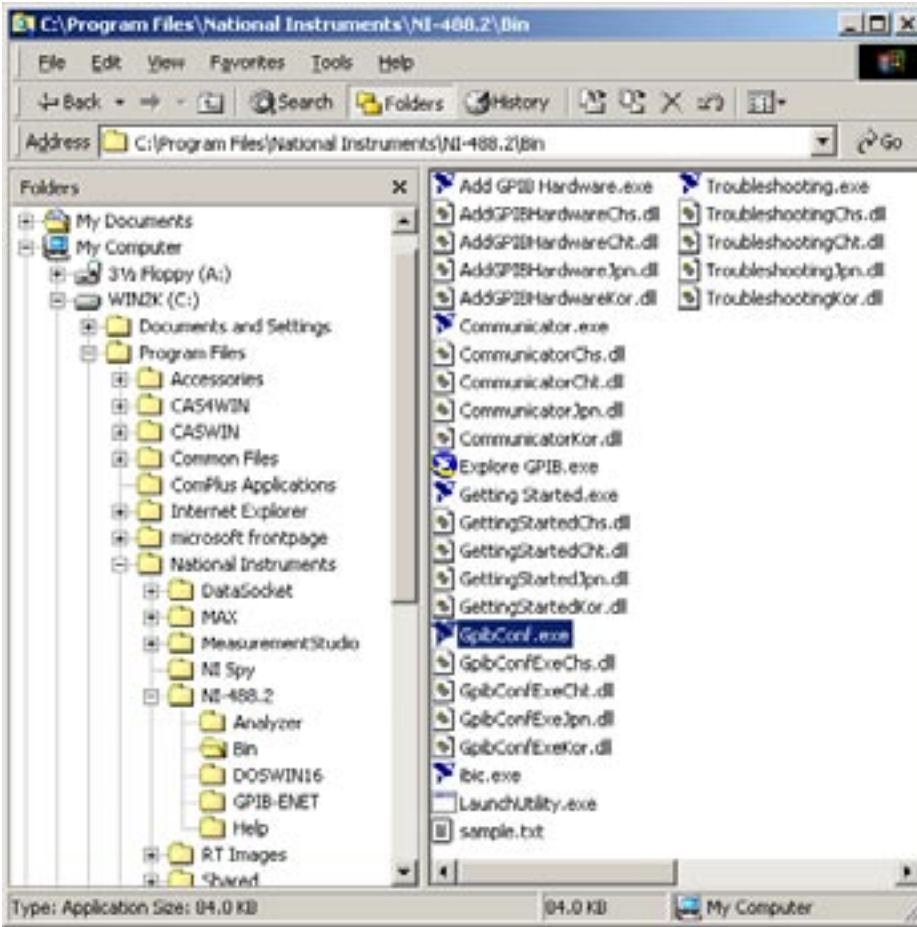


Figure 3

To configure the GPIB device settings for the Tracker 5100DS, locate the application GPPIBCONF.EXE as shown in figure 3. Start this application.

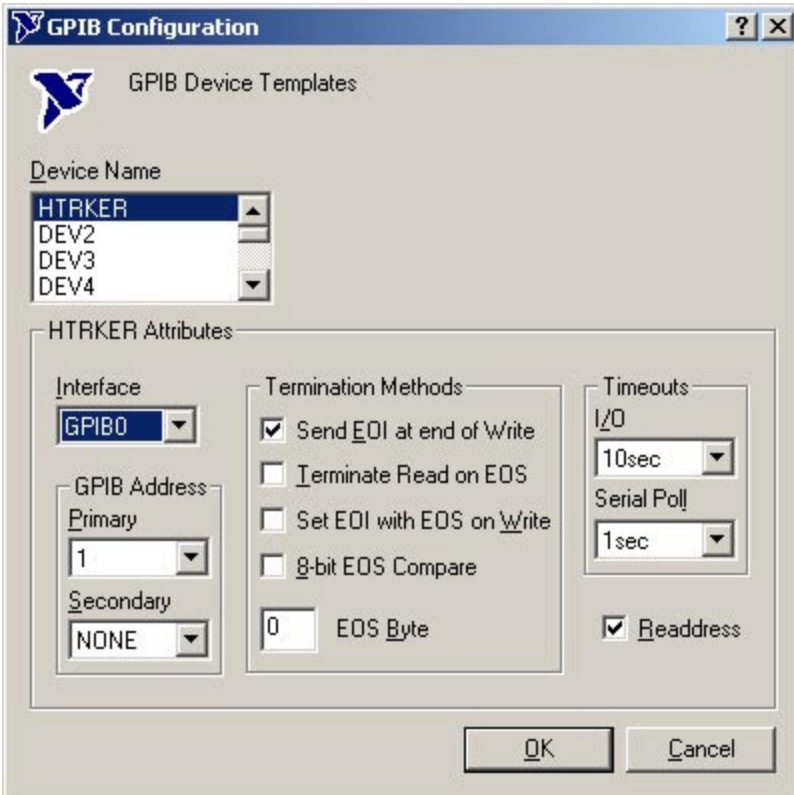


Figure 4

DOUBLE-CLICK the item DEV1 in the drop list to rename Dev1 to HTRKER. Refer to the settings shown in figure 4 to setup the device HTRKER.

Restart the PC when the configurations are completed.

After restarting, start Huntron Workstation and select Setting/Preferences. In the Preferences window, set the Default Ranges to Tracker 5100DS capable ranges (i.e DS-LOW, DS-Med1, DS-Med2). Save Preferences. Select Settings/Hardware Settings. Select Tracker 5100DS from the Test Hardware menu. Click OK or Save. Create a test and execute the test to check communications with the Tracker. If a GPIB communication error occurs, recheck the GPIB settings.